

# Dolox 210LC-7 Long Reach Excavator

CUMMINS B5.9-C ENGINE	116 kW / 155 HP
Operating Weight	24,360 kg (53,700 lb)
Bucket Capacities, PCSA	0.22 ~0.51m <sup>3</sup> (0.29 ~ 0.67yd <sup>3</sup> )
Maximum Reach on ground level	15,120 mm (49' 7")
Digging depth	11,760 mm (38' 7")
Travel Speed	3.4 to 5.3 km / hr (2.1 to 3.3 mph)

**L**ong Reach Front Includes : Boom, Arm, Linkage, Bucket, Cylinders (boom, arm, and bucket)Hydraulic lines, and Additional counterweight for stability.

**D**esigned especially for river maintenance work, the long-range front attachments give all the advantages of a hydraulic excavator plus an exceptional long reach ranging from 15m(50ft).

### Relief valve setting

Boom	330 kgf/cm <sup>2</sup> (4,690 psi)
Arm	300 kgf/cm <sup>2</sup> (4,270 psi)
Bucket	280 kgf/cm <sup>2</sup> (3,980 psi)
Travel	330 kgf/cm <sup>2</sup> (4,690 psi)
Swing circuit	240 kgf/cm <sup>2</sup> (3,410 psi)
Pilot circuit	35 kgf/cm <sup>2</sup> ( 500 psi)
Service valve	Installed

### Hydraulic cylinders

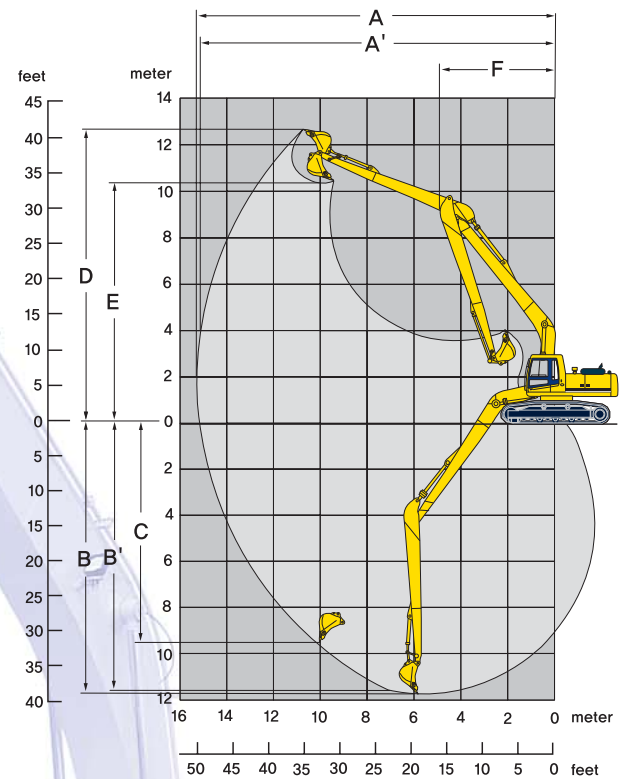
No. of cylinder - bore × rod × stroke	
Boom	2 - 120 × 85 × 1,290mm (4.7" × 3.3" × 50.8")
Arm	1 - 140 × 95 × 1,460mm (5.5" × 3.7" × 57.5")
Bucket	1 - 100 × 70 × 870mm (3.9" × 2.8" × 34.3")

### Digging force

Bucket digging force	(SAE)7,340 kgf [71.9kN] (16,180 lbf) (ISO)8,510 kgf [83.5kN] (18,760 lbf)
Arm crowd force	(SAE)4,990 kgf [48.9kN] (11,000 lbf) (ISO)5,070 kgf [49.7kN] (11,180 lbf)

### Working ranges

	Boom length	8,200 mm (26' 11")
	Arm length	6,300 mm (20' 8")
A	Max. digging reach	15,220 mm (50' 0")
A'	Max. digging reach on ground	15,120 mm (49' 7")
B	Max. digging depth	11,760 mm (38' 7")
C'	Max. digging depth (8' level)	11,650 mm (38' 3")
C	Max. vertical wall digging depth	9,610 mm (31' 6")
D	Max. digging height	12,550 mm (41' 2")
E	Max. dumping height	10,280 mm (33' 8")
F	Min. swing radius	4,870 mm (16' 0")



### Operating weight (approximate)

Operating weight, including 8200 mm (26'11") Boom, 6300 mm(20'8") Arm, PCSA heaped 0.51m<sup>3</sup> (0.67 yd<sup>3</sup>) backhoe bucket, and 800 mm (31.5") triple grouser shoe, additional counterweight lubricant, coolant, and full fuel tank, hyd tank and the standard equipment.

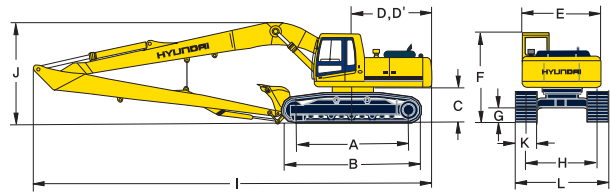
#### Major component weight

Upperstructure	5,850 kg (12,900 lb)
Counterweight	5,300 kg (11,680 lb)
Attachment	4,250 kg ( 9,370 lb)

Operating weight	24,360 kg (53,700 lb)
Drawbar pull	20,100 kg (44,310 lb)
Ground pressure	0.42 kgf/cm <sup>2</sup> ( 5.97 psi)

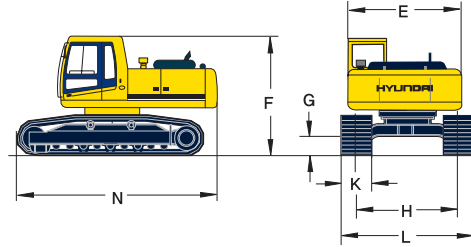
## Shipping Dimensions

A	Tumbler distance	3,650 mm (12' 0")
B	Overall length of crawler	4,440 mm (14' 7")
C	Ground Clearance of counterweight	1,060 mm ( 3' 6")
D	Tail swing radius	2,830 mm ( 9' 3")
D'	Rear-end length	2,770 mm ( 9' 1")
I	Overall length	12,030 mm (39' 6")
J	Overall height of boom	3,280 mm (10' 9")



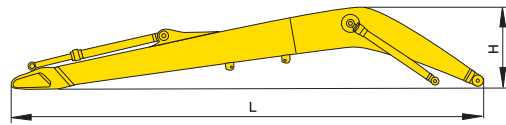
## Base Machine

E	Overall width of upperstructure	2,700 mm ( 8' 10")
F	Overall height cab	2,920 mm ( 9' 7")
G	Min. ground clearance	480 mm ( 1' 7")
H	Track gauge	2,390 mm ( 7' 10")
K	Track shoe width	800 mm ( 31.5")
L	Overall width	3,190 mm (10' 6")
N	Overall length	4,990 mm (16' 4")
	Weight	20,110 kg (44,330 lb)



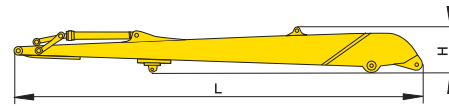
## Long Reach Boom

L	Overall length	8,395 mm (27' 7")
H	Overall height	1,515 mm ( 5' 0")
W	Overall width	800 mm ( 2' 7")
	Weight	2,470 kg (5,450 lb)



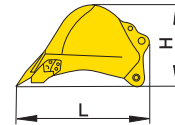
## Long Reach Arm

L	Overall length	7,280 mm (23' 11")
H	Overall height	835 mm ( 2' 9")
W	Overall width	480 mm ( 1' 7")
	Weight	1,340 kg (2,950 lb)



## Bucket

L	Overall length	1,400 mm ( 4' 7")
H	Overall height	820 mm ( 2' 8")
W	Overall width	1,035 mm ( 3' 5")
	Weight	440 kg (970 lb)



## Lifting capacities

Boom : 8.2 m (26' 11")  
Arm : 6.3 m (20' 8")

Bucket : 0.51m<sup>3</sup> PCSA heaped  
Shoe : 800 mm (31.5") triple grouser shoe with 5,300kg (11,680 lb) CWT

Rating over - front  
 Rating over - side or 360 degree

Load point height m (ft)		Load radius								At max. reach		
		3.0 m (10.0 ft)		6.0 m (20.0 ft)		9.0 m (30.0 ft)		12.0 m (40.0 ft)		Capacity	Reach	
												m(ft)
9.0 m (30.0 ft)	kg lb							* 830 * 1830	* 830 * 1830	* 1330 * 2930	* 1330 * 2930	13.11 (43.0)
6.0 m (20.0 ft)	kg lb							* 1430 * 3150	* 1430 * 3150	* 1410 * 3110	* 1160 * 2560	14.37 (47.1)
3.0 m (10.0 ft)	kg lb					* 1990 * 4390	* 1990 * 4390	* 1670 * 3680	1630 3590	* 1520 * 3350	980 2160	14.89 (48.9)
<b>Ground Line</b>	kg lb	* 4560 * 10050	* 4560 * 10050	* 4330 * 9550	* 4330 * 9550	* 2650 * 5840	2430 5360	* 1980 * 4370	1440 3170	* 1670 * 3680	930 2050	14.75 (48.4)
- 3.0 m (- 10.0 ft)	kg lb	* 5710 * 12590	* 5710 * 12590	* 5250 * 11570	3920 8640	* 3150 * 6940	2140 4720	* 2220 * 4890	1310 2890	* 1860 * 4100	1020 2250	13.92 (45.7)
- 6.0 m (- 20.0 ft)	kg lb	* 7790 * 17170	* 7790 * 17170	* 5370 * 11840	3840 8470	* 3280 * 7230	2060 4540			* 2090 * 4610	1330 2930	12.25 (40.2)
- 9.0 m (- 30.0 ft)	kg lb	* 8780 * 19360	* 8780 * 19360	* 4510 * 9940	4110 9060	* 2620 * 5780	2260 4980					

NOTE 1. Lifting capacity are based on SAE J1097, ISO 10567  
2. Lifting capacity of the Robex Series does not exceed 75% of tipping load with the machine on firm, level ground or 87% of full hydraulic capacity.  
3. The load point is a hook (standard equipment) located on the back of the bucket. 4. ( \* ) indicates load limited by hydraulic capacity.



**HYUNDAI**  
HEAVY INDUSTRIES CO., LTD.  
CONSTRUCTION EQUIPMENT DIVISION

ULSAN OFFICE (Sales Office) HCE U.S.A.  
682-792, 1, CHEONHA-DONG, DONG-GU, ULSAN, KOREA  
TEL: (82)(52) 230-2114 FAX: (82)(52) 230-6120  
955 ESTES AVENUE ELK GROVE VILLAGE, IL 60007  
TEL: (1) 847-437-3333 FAX: (1) 847-437-3574  
HHI EUROPE N.V. VOSSENDAAL 11, 2440 GEEL, BELGIUM  
TEL: (32) 14-562200 FAX: (32) 14-593405-06

PLEASE CONTACT

www.hyundai-ce.com

2002. 10. rev1