

ENGINE

| | |
|------------------------------|---------------------------|
| Make/Model | Yanmar / 4TNV106T |
| Aspiration | Turbo-charged |
| Displacement (L) / cylinders | 269 cu.in. (4.4) / 4 |
| Horsepower (kW) @ rpm | 97 hp (72) @2200 |
| Maximum Torque (Nm) @ rpm | 191 ft.-lbs. (393) @ 1400 |

PERFORMANCE

| | |
|--------------------------------------|------------------|
| Tipping Capacity - SAE J732 (kg) | 7056 lbs. (3200) |
| Rated Operating Load | |
| SAE J818 @ 50% tipping capacity (kg) | 3528 lbs. (1600) |
| SAE J818 @ 35% tipping capacity (kg) | 2470 lbs. (1120) |
| Breakout Force (kN) | |
| Bucket | 8692 lbs. (38.6) |
| Lift Arm | 8549 lbs. (38.0) |

ELECTRICAL

| | |
|---------------|---------------|
| Battery / CCA | 12-volt / 660 |
| Alternator | 50 amp |

UNDERCARRIAGE

| | |
|---|--------------------|
| Traction Pump / Traction Drive | Piston / Planetary |
| Traction Braking | Hydraulic |
| Drawbar Pull (kN) | 13,066 lbf (58.1) |
| Roller Type / Track Rollers - each side | Steel / 5 |
| Track Width | 18" (457) |
| Track Contact Length | 63" (1598) |
| Ground Pressure (kg/cm ²) | 4.3 psi (0.30) |
| Travel Speed | |
| Low | 0-5.0 mph (0-8) |
| High | 0-6.9 mph (0-11) |

HYDRAULIC SYSTEM

| | |
|---|-----------------|
| Operating Pressure (bar) | 2988 psi (206) |
| Auxiliary Hydraulic Flow - standard (L/min) | 23.4 gpm (88.6) |

CAPACITIES

| | |
|-------------------------|------------------|
| Fuel Tank (L) | 28.5gal. (107.9) |
| Hydraulic Reservoir (L) | 16.9 gal. (64) |
| Engine Oil (L) | 14.8 qts. (14) |
| Engine Coolant (L) | 16.0 qts. (15.1) |

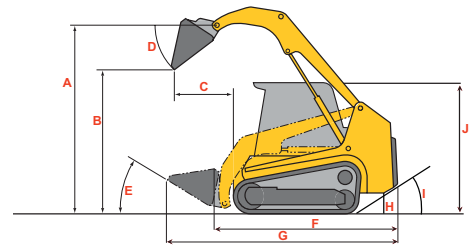
DIMENSIONS & WEIGHT

| | |
|---|--------------------|
| Operating Weight - approximate (kg) | 10,692 lbs. (4850) |
| Maximum Lift Height to Bucket Pin (mm) | (A) 126" (3203) |
| Dump Height (mm) | (B) 94" (2375) |
| Reach at Maximum Lift (mm) | (C) 41" (1049) |
| Dump Angle | (D) 37° |
| Bucket Rollback at Ground Level (mm) | (E) 32° |
| Length - without bucket (mm) | (F) 122" (3106) |
| Length - with bucket (mm) | (G) 159" (4026) |
| Ground Clearance (mm) | (H) 14.3" (363) |
| Angle of Departure | (I) 28° |
| Height - to top of ROPS (mm) | (J) 87" (2217) |
| Width - without bucket (mm) | (K) 73" (1884) |
| Width - with bucket (mm) | (L) 84" (2134) |
| Rear Clearance Radius (mm) | (M) 72" (1816) |
| Front Clearance Radius - with bucket (mm) | (N) 106" (2692) |

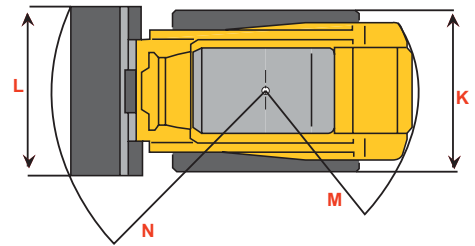
BUCKET

| | |
|---|------------------------|
| Mounting | Universal Quick-Attach |
| Capacity - SAE Heaped (m ³) | 22.0 cu.ft. (0.63) |

CTL80



Reference Diagram



Forget about getting stuck in the mud. Or damaging the landscape. Now there's another way to go about your business. It's the Gehl Compact Track Loader, quickly becoming the most sought after piece of equipment by contractors everywhere. These loaders are bursting with power, yet engineered for total comfort and control. Try one on for size and feel the difference.

Contact your nearest Gehl dealer for more information.

GEHL
www.gehl.com

143 Water Street
West Bend, WI 53095
U.S.A.

Tel: 262-334-9461
Fax: 262-338-7517

CTL80

STANDARD EQUIPMENT

- Joystick (Hydraulic Pilot-Operated) "Hands Only" Controls
- Servo-Controlled Hydrostatic Drive
- All-Tach™ Attachment System (Universal Style)
- ROPS/FOPS - Level I Approved Overhead Guard
- Hydraulic Self-Leveling - Lift Action
- Independent Hydraulic Reservoir with Cooler
- Operator Restraint Bar with Armrests & Adjustable Seatbelt
- Rubber Track Undercarriage System
- Mechanical Lift Cylinder Lock
- Vandalism Lock Provisions - Engine Cover / Rear Door / Fuel Cap
- Yanmar Liquid-Cooled Diesel Engine
- Dual-Element Air Cleaner with Indicator
- Engine Automatic Shutdown System
- Electric Switch Auxiliary Hydraulic Control
- Dual, Interior Cab-Mounted Rear View Mirrors & Single Mounted Rear View Mirror
- Electrohydraulic Push Button - Lift Arm Float Feature
- Full Suspension Seat 6-Way Adjustable
- Two-Speed Hydrostatic Drive System
- Elevated Planetary Final Drives with SAHR Disc Brakes
- Swing-Out Radiator & Hydraulic Oil Cooler
- Fuel, Engine Temperature & Hourmeter Gauges
- Warning Lights
- Glow Plug Starting
- Interlock System for Lift, Tilt Cylinders, Auxiliary Hydraulic Functions & Drives
- Operational Lights - 2 Front, 2 Rear Halogen Lights
- Back-Up Alarm
- Horn
- Hand Throttle



Work Tirelessly

OPTIONAL EQUIPMENT

- Generation II H / AC with Pressurized Cab
- Dual Hand Controls
- Foot Throttle Kit

Eliminate the headaches of challenging terrain with a machine that will get you out of almost any predicament. Compact Track Loaders from Gehl are turf-friendly yet highly agile, outperforming most skid loaders in adverse conditions. And with no tires to go flat, these machines work tirelessly, as long as you do.



GEHL®

www.gehl.com

SAFETY IS NO ACCIDENT.

Gehl Company reminds users to read and understand the operator's manual before operating any piece of equipment. Additionally, be sure all safety devices and shields are securely in place and functioning properly.

Gehl Company reserves the right to make changes in design or specifications at any time without notice or obligation.