



Cat[®] TH406

Telehandler

Specifications

Engine

| | |
|--|------------------------------------|
| Model | |
| Standard | Cat [®] C4.4 DITAAC |
| Optional | Cat [®] C4.4 DITAAC-ACERT |
| Gross Power | |
| Standard | 74.5 kW/101 hp |
| Optional | 93.1 kW/126 hp |
| Maximum Torque | |
| Standard | 410 Nm/1400 rpm |
| Optional | 496 Nm/1400 rpm |
| Bore | 105 mm |
| Stroke | 127 mm |
| Displacement | 4.4 liter |
| • All engine horsepower (hp) are metric. | |

Weights

| | |
|------------------|---------|
| Operating Weight | 7200 kg |
|------------------|---------|

Operating Specifications

| | |
|-----------------------------------|---------|
| Rated Load Capacity | 3700 kg |
| Maximum Lift Height | 6100 mm |
| Maximum Forward Reach | 3109 mm |
| Top Travel Speed | 40 km/h |
| Load at Max Height | 2000 kg |
| Load at Max Reach | 1500 kg |
| Outside Turning Radius Over Tyres | 3585 mm |
| Outside Turning Radius Over Forks | 4740 mm |

Service Refill Capacities

| | |
|----------------|-----------|
| Fuel Tank | 150 liter |
| Hydraulic Tank | 90 liter |

Tyres

| | |
|----------|-----------------|
| Standard | 15.5/80-24 16PR |
|----------|-----------------|

Brakes

| | |
|----------------|------------------------------|
| Service Brakes | Servo assisted on front axle |
| Parking Brakes | Mechanical on front axle |

Hydraulic System

| | |
|----------------------------|--|
| Maximum System Pressure | 250 bar |
| Maximum Pump Flow | 150 liter/min |
| Pump Type | Variable displacement load sensing axial piston pump |
| Auxiliary Hydraulic Supply | |
| Intermittent | 80 liter/min |
| Continuous | 60 liter/min |

Transmission Speeds

| | |
|---------|------|
| Forward | km/h |
| 1 | 7 |
| 2 | 12 |
| 3 | 21 |
| 4 | 32 |
| 5 | 40 |
| Reverse | |
| 1 | 7 |
| 2 | 12 |
| 3 | 21 |

Boom Performance

| | |
|----------------------------------|---------|
| | seconds |
| Boom Up | 5.0 |
| Boom Down | 4.0 |
| Tele In | 4.5 |
| Tele Out | 5.0 |
| Crowd Forward (dump) | 3.0 |
| Crowd Backward | 3.0 |
| Combined | |
| Up and Out | 8.0 |
| Down and In | 6.0 |
| Drawbar Pull 74.5 kW | 82.4 kN |
| Drawbar Pull 93.1 kW | 86.8 kN |
| Bucket Breakout Force to ISO8313 | 55 kN |

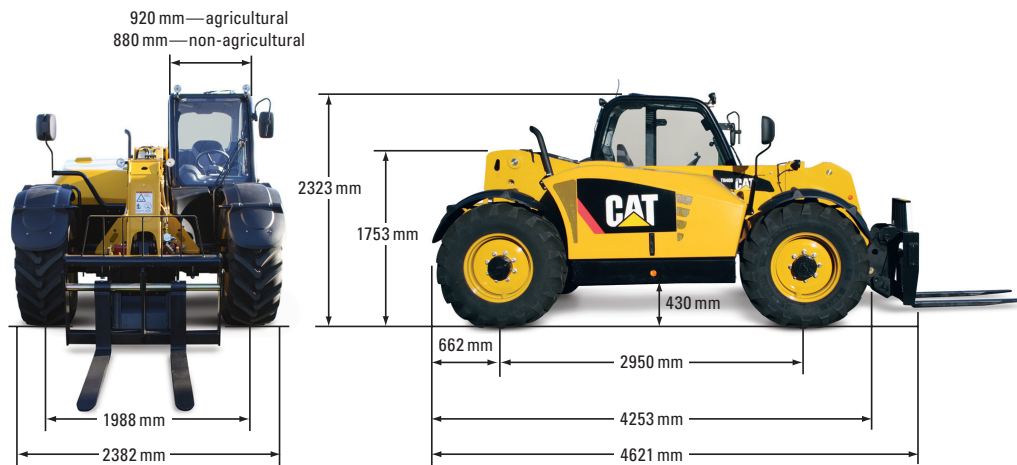
Sound

| | |
|----------------|-----------|
| Operator Sound | 78 dB(A) |
| Exterior Sound | |
| 74.5 kW Engine | 106 dB(A) |
| 93.1 kW Engine | 107 dB(A) |

TH406 Telehandler

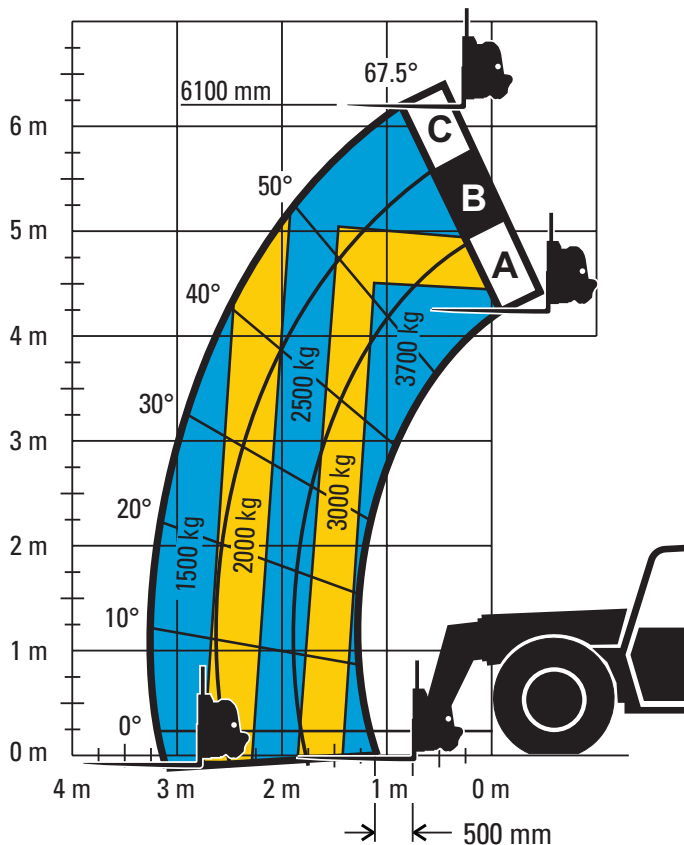
Dimensions

All dimensions are approximate.



Outside turning radius over tyres: 3585 mm

Load Chart and Dimensions



IMPORTANT

Rated lift capacities shown are with machine equipped with carriage and pallet forks. The machine must be level on a firm surface with undamaged, properly inflated tyres. Machine specifications and stability are based on rated lift capacities at specific boom angles and boom lengths. (If specifications are critical, the proposed application should be discussed with your dealer.)

DO NOT exceed rated lift capacity loads, as unstable and dangerous machine conditions will result.

DO NOT tip the machine forward to determine the allowable load.

Due to continuous product improvements, machine specifications and/or equipment changes may be made without prior notification.