



Cat[®] TH255

Telehandler

Specifications

Engine

Model	Cat [®] C4.4 Stage IIIA DIT
Gross Power	63 kW/84 hp
Maximum Torque	353 Nm/1400 rpm
Displacement	4.4 litre

Weights

Operating Weight with Carriage and Forks	4899 kg
--	---------

Operating Specifications

Rated Load Capacity	2500 kg
Maximum Lift Height	5600 mm
Maximum Forward Reach	3250 mm
Capacity at Max Height	1360 kg
Capacity at Max Reach	860 kg
Turning Radius over Tyres	3200 mm
Top Travel Speed	26 km/h

Service Refill Capacities

Fuel Tank	106 litre
Hydraulic System	64 litre

Tyres

Standard	12.00 x 16.5
Optional	14.00 x 17.5

Brakes

Service Brakes	Inboard wet disc brakes on front axle
Parking Brakes	Wet disc spring-applied hydraulic release

- Light on dash indicates when brake is on.

Axles

- Planetary on front and rear axles.
- High bias limited slip differential on front axle.

Hydraulic System—Implement

Pump Type	Single Section Gear Pump
Maximum system pressure	240 bar
Maximum Pump Flow	85 litre/min

- Auxiliary Hydraulic Circuit used for all attachments equipped with cylinders or other hydraulic components. Consists of valves, controls, and hydraulic lines.

Transmission

Transmission	Hydrostatic
Forward	Variable Speed
Reverse	Variable Speed

Boom Performance

	seconds
Boom Up	6.2
Boom Down	4.3
Tele In	3.4
Tele Out	6.3
Bucket Dump	2.0
Bucket Crowd	2.4
Drawbar Pull (Loaded)	38,7 kN

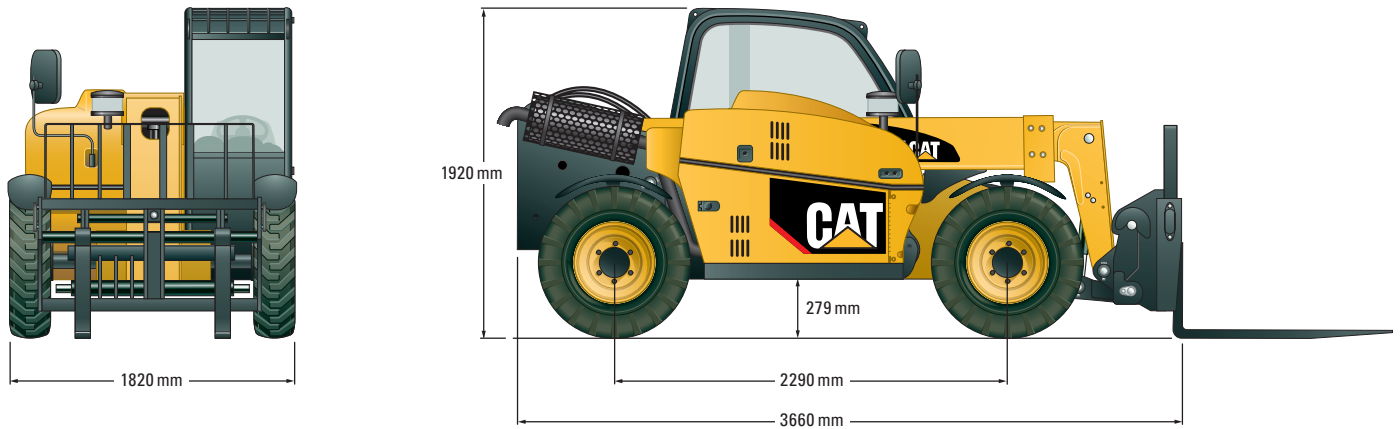
Instruments

- Indicators for machine hours, fuel-level, steer mode, steering pressure, battery charge, coolant temperature, parking brake and engine pre-heat.
- Reverse motion alarm.
- Panel and switches are illuminated for night operation.

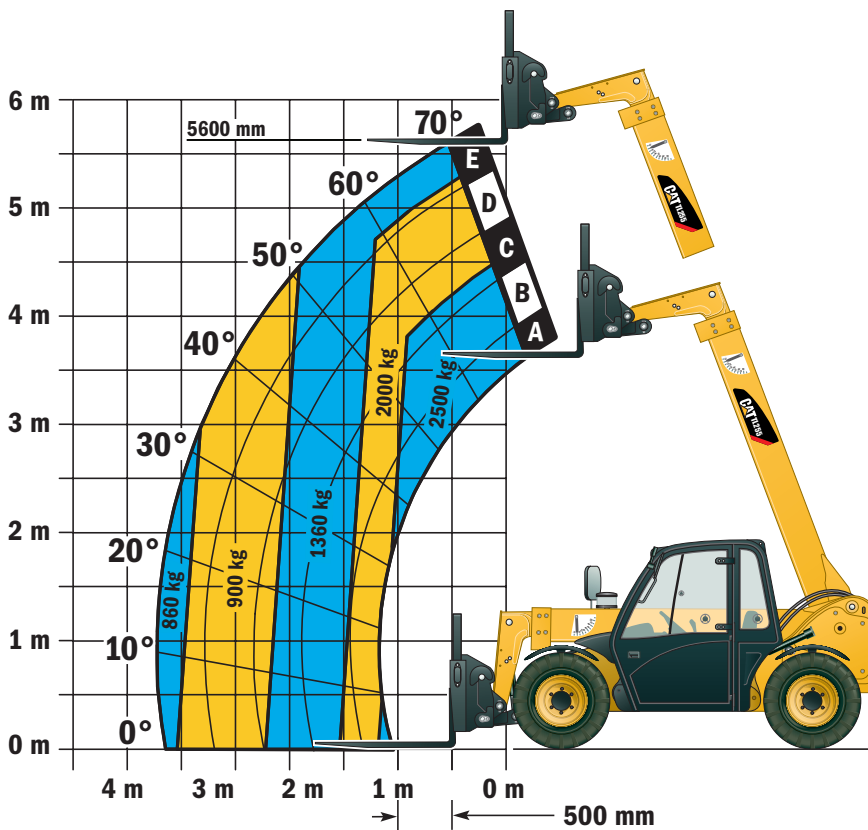
TH255 Telehandler

Dimensions

All dimensions are approximate.



Load Chart and Dimensions



IMPORTANT

Rated lift capacities shown are with machine equipped with carriage and pallet forks. The machine must be level on a firm surface with undamaged, properly inflated tyres. Machine specifications and stability are based on rated lift capacities at specific boom angles and boom lengths. (If specifications are critical, the proposed application should be discussed with your dealer.)

DO NOT exceed rated lift capacity loads, as unstable and dangerous machine conditions will result.

DO NOT tip the machine forward to determine the allowable load.

Due to continuous product improvements, machine specifications and/or equipment changes may be made without prior notification.