

# TH215

Compact Telehandler

**CAT**®



---

**Cat® 3054B-DI Naturally Aspirated Diesel Engine**

<b>Net Power</b>	<b>60 kW/80 hp</b>
<b>Gross Power</b>	<b>63 kW/84 hp</b>
<b>Operating Weight</b>	<b>5500 kg</b>
<b>Rated Load Capacity</b>	<b>2500 kg</b>
<b>Maximum Lift Height</b>	<b>5.5 m</b>

# TH215 Compact Telehandler

---

## Operator Efficiency

With the TH215, efficiency has been designed into every aspect of the cab, with a comfortable seat and low effort single joystick control. **pg. 4**

---

## Ease of Operation

From the carefully designed low profile engine hood to its ease of maneuverability, this machine is very simple to operate, leading to less operator fatigue and higher productivity. **pg. 5**

---

## Performance and Powertrain

The TH215 has a maximum lift capacity of 2500 kg and 5.5 m lift height. It utilizes a Caterpillar® designed 3054B Direct Injection Naturally Aspirated engine and a hydrostatic drive for smooth, accurate handling combined with powerful performance. **pg. 6**

*The TH215 Telehandler is a highly versatile, compact machine, designed to deliver maximum performance with traditional Cat reliability, durability and productivity in the toughest working conditions.*



---

### **Versatility**

The TH215's compact size combined with its durability and reliability make this machine an all-around performer, whether in construction, industrial or agricultural applications. **pg. 7**

---

### **Serviceability**

The TH215 is designed for quick and easy serviceability, with convenient access to all major service points, reducing the amount of downtime. **pg. 8**

---

### **Customer Support**

Caterpillar Dealer Services help you operate longer with lower costs, helped by significantly extended service intervals. **pg. 8**



## Operator Efficiency

*With the TH215, efficiency has been designed into every aspect of the cab, with a comfortable seat and low effort single joystick control.*



**Enclosed Cab.** The TH215 is equipped with an enclosed cab allowing the operator to work comfortably, with air conditioning available as an option. The cab structure has been designed and certified to provide falling object and rollover protection (FOPS/ROPS).

**Seat.** The standard suspension seat is adjustable to provide a comfortable ride and an air suspension seat is available as an option. The operator can adjust the angle and the height of the steering column for maximum comfort.



**Control Layout.** The cab layout has been ergonomically designed to make the operator's job as easy as possible. The controls are logical, highly responsive and easy to reach. The instrument panel is comprehensive and clear. The gauge cluster includes a tachometer, hour meter, fuel gauge and engine coolant temperature indicator to monitor the machine's systems.

**Single Joystick.** The cable-operated joystick is located within easy reach of the operator. Diagonal movement of the joystick allows a combination of boom and tool functions to be achieved simultaneously. To raise or lower the boom, move the joystick backward or forward respectively. Move the joystick to the right to dump and the left to rack back. The colored buttons on the joystick control the boom and auxiliary hydraulic functions.

**Hydraulics.** A hydraulic header tank is located in the engine compartment for easy fill access. The hydrostatic circuit is supplied by the hystat gear pump, which provides 80L/min of flow.

## Ease of Operation

*From the carefully designed low profile engine hood to its ease of maneuverability, this machine is very simple to operate, leading to less operator fatigue and higher productivity.*



**Visibility.** The machine's low profile design, side mounted engine, and low boom pivot point allow the operator to carry loads in a low position without obstructing visibility to the right of the machine. The mid-mounted cab also improves visibility to the rear. The front windshield is a rounded single sheet of glass stretching from just above the dashboard, over the operator's head for excellent visibility. The upper portion of the cab door is independently hinged so that it can be opened and secured for ventilation and ease of communication.

**Maneuverability.** The compact dimensions of the TH215 offer excellent maneuverability. With its low profile and 3.5 meter turning radius, it can work productively in confined areas.



**Steering Modes.** The compact telehandlers offer three steering modes, (circle, two wheel and crab steer) to allow an operator to easily position the machine in small, confined areas. Steering modes are selected by using the steering mode switch in the operator's compartment. An indicator light in the cab illuminates when the wheels are properly aligned.

**Fenders.** The fenders are mounted to the axle and have the ability to turn with the wheels allowing operators to easily determine the wheel orientation while protecting them from mud, rocks and water spray.

## Performance and Powertrain

*With its Caterpillar designed 3054B-DI Naturally Aspirated engine and a hydrostatic drive, the TH215 delivers a powerful performance from a small machine*



**Engine.** The TH215 is powered by the well-proven Caterpillar 3054B-DI Naturally Aspirated diesel engine. This provides high fuel efficiency and excellent reliability developing full torque at lower revs compared to other engines.

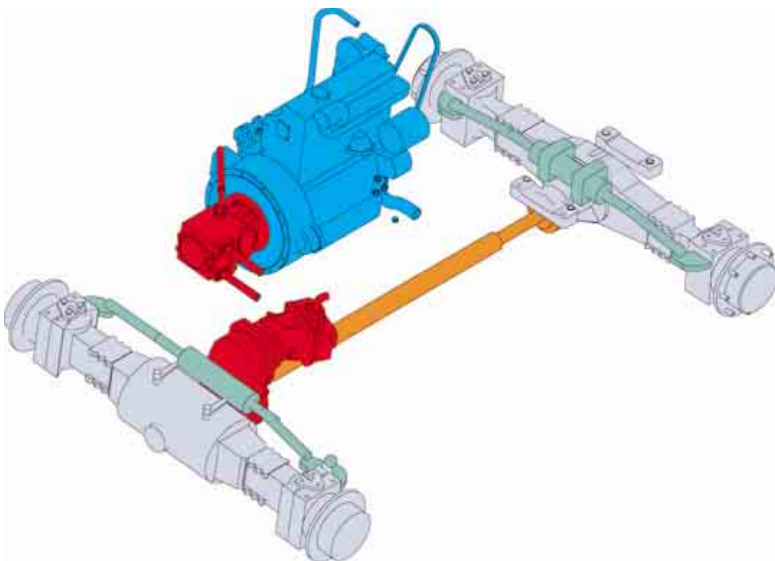
**Hydrostatic Drive.** The TH215 features a high pressure, closed circuit hydrostatic drive to deliver powerful but smooth acceleration while providing continuous torque through the two speed ranges. The low speed band is 8 km/h and the high speed band is 32 km/h.

**Hystat Pump.** The hystat pump is an axial piston variable displacement pump with a cradle swashplate design.

**Power Mode.** A power mode switch located on the right side of the operator console allows an operator to select between two different modes of operation.

**Axles.** Both axles steer and utilize planetary reduction hubs. The rear axle is mounted at the center trunnion allowing 5 degrees of total oscillation, and the front axle is fixed.

**Brakes.** The brake system is filled with hydraulic oil from the main hydraulic system. The cable-operated park brake is foot activated and mechanically activates the park brake. The brake system has an accumulator that provides reserved brake pressure in the event of a hydraulic failure.



## Versatility

*The TH215's compact size combined with its durability and reliability make this machine an all-around performer.*



**Compact Size.** The small size and maneuverability of these machines make them capable of providing a solution to a customer who may not have used a telehandler before or to those customers who need compact size combined with low cab height.

**Applications.** The TH215 is a very versatile machine that can be used in a wide variety of applications. With the correct work tool for the job, the machine's size and capability can provide an advantage in many of the applications listed below.

### General Construction

- Multi Storey Parking Lot Refurbishment
- Material Handling
- Site Maintenance and Clean-up
- Specialized Material Placement
- Material Loading and Unloading
- Landscaping
- Pallet Handling
- Snow Removal

### Agriculture

- Manure Handling
- General Bucket Work
- Bulk Material Handling
- Feed Passage
- Alley Clean-Up
- Bale Handling/Stacking
- Poultry Farming
- Trailer Towing
- Rehandling
- Truck Loading/Unloading



**Manual Coupler.** The TH215 utilizes a manual quick coupler using the same interface as the Caterpillar Skid Steer Loader.

### Industrial

- Material Rehandling
- Container Loading/Unloading
- Transfer Station Rehandling
- Material Loading/Unloading
- Recycling
- Waste Management
- Warehousing Activities
- Lumber Yard Work

**Work Tools.** Utilization of various work tools greatly enhances the versatility of these machines and increases the ability to perform multiple tasks. The following work tools are available:

#### General Purpose Bucket (0.75 m<sup>3</sup>)

Loading, carrying, dumping and general purpose job site clean up.

#### Light Material Bucket (2.0 m<sup>3</sup>)

Loading, carrying, dumping and handling light, loosely packed materials, such as mulch, hay, wood chips, snow etc. The optional bolt-on cutting edge is ideal for heavy wear applications.

#### Pallet Forks and Carriages (1067/1120/1220 mm)

Handling palletized loads, such as bricks, concrete blocks, lumber, drywall and pipe.

---

## Serviceability

*The TH215 is designed for quick and easy serviceability, with convenient access to all major service points, reducing the amount of downtime.*



**Ease of Access.** The TH215 utilizes a side mounted engine design, which provides easy access to major service points. Regular maintenance is important in ensuring a long, productive machine life and also helps minimize downtime on the job. The complete service schedule can be found in the Operation and Maintenance Manual that accompanies the machine.

**Cooling Package.** The hydraulic oil is cooled upon exit from the hystat drive motor by an oil-to-air heat exchanger before returning to the main hydraulic tank. The TH215 is equipped with a blower fan that pushes air out through the rear-mounted radiator and an oil cooler that tilts out for cleaning purposes. This directs the hot air away from the operator providing a more comfortable work environment. An optional reversing fan is available for more effective cooling when working in hot or rugged environments.

**Boom.** The TH215 has a two-section box-formed boom constructed from a continuously welded, high-strength, heavy-duty pressed steel plate with generous boom section overlaps to reduce pad loads and increase pad life.

**Electrical System.** A battery disconnect switch is standard to help prevent theft and to minimize drain on the battery. The fuse panel is located within the cab console and is well protected by a removable plastic cover.

**Longitudinal Stability Indicator.** The Longitudinal Stability Indicator (LSI) is a device used to alert the operator when the machine is reaching an unstable condition. The LSI is mounted on the right side of the console in the operator station and uses information from a load sensor mounted on the rear axle. Lights on the LSI screen will illuminate to show the machine's ability to handle the load.

---

## Customer Support

*Caterpillar Dealer Services help you operate longer with lower costs, helped by significantly extended service intervals.*



**Selection.** Make detailed comparisons before you buy. Your Cat Dealer can give you precise answers to these questions.

**Purchase.** Look at the value that the TH215 Telehandler will offer you. Consider all the flexible financing options your Cat Dealer offers as well as day to day operating costs.

**Operation.** Improving operating techniques can boost your profits. Your Cat Dealer has training literature and other ideas to help increase your productivity.

**Maintenance.** Diagnostic programs such as Scheduled Oil Sampling and Technical Analysis help you avoid unscheduled repairs.

**Replacement.** Repair, rebuild or replace? Your Cat Dealer can help you evaluate the cost involved so you can make the right choice.

**Product Support.** You will find high availability of parts at our Dealer parts counter. Cat Dealers utilise a worldwide computer network to find in-stock parts to minimise machine downtime.

**Easy Financing.** Your Cat Dealer can provide a financing package to meet your needs.



## Engine

Caterpillar 3054B-DI naturally aspirated, direct injection, four cylinder diesel engine.

Ratings	2300 rpm
Gross Power	63 kW/84 hp
Net Power	
ISO 9249	60 kW/80 hp
EEC 80/1269	60 kW/80 hp
Maximum Torque	300 Nm
Bore	103 mm
Stroke	127 mm
Displacement	4.2 liters

## Operating Specifications

Rated Load Capacity	2500 kg
Maximum Lift Height	5.5 m
Top Travel Speed	32 km/h
Load at Maximum Height	2200 kg
Maximum Forward Reach	3.1 m
Load at Maximum Reach	1000 kg
Outside Turning Radius	3.5 m
Trailer Towing Capacities	
Maximum Imposed Down Load on Drawbar	1500 kg
Maximum Towed Weight	6000 kg
Maximum Gross Train Weight	12 000 kg

## Hydraulic System

Maximum System Pressure	240 bar
Maximum Pump Flow	80 L/min
Auxiliary Hydraulic Supply	80 L/min / 240 bar
Pump Type	Gear

## Brakes

Service brake	Servo assisted on front axle
Parking brake	Front axle

## Tires

Standard	12.5-20 Goodyear MPT
----------	----------------------

## Sound

### Operator Sound

The operator sound level measured according to the procedures specified in ISO 6396 is 77 dB(A).

### Exterior Sound

The labeled spectator sound power level measured according to the test procedures and conditions specified in 2000/14/EC is 105 dB(A).

## Boom Performance

Boom up	6 seconds
Boom down	4.5 seconds
Tele in	4.3 seconds
Tele out	5.7 seconds
Crowd forward (dump)	2.2 seconds
Crowd backward	2.7 seconds
Combined	
up and out	13 seconds
down and in	8.5 seconds

## Hydrostatic Transmission

Number of speed ranges (forward/reverse)	2
Maximum Travel Speed	
Range 1	8 km/h
Range 2	32 km/h
Number of power modes	2

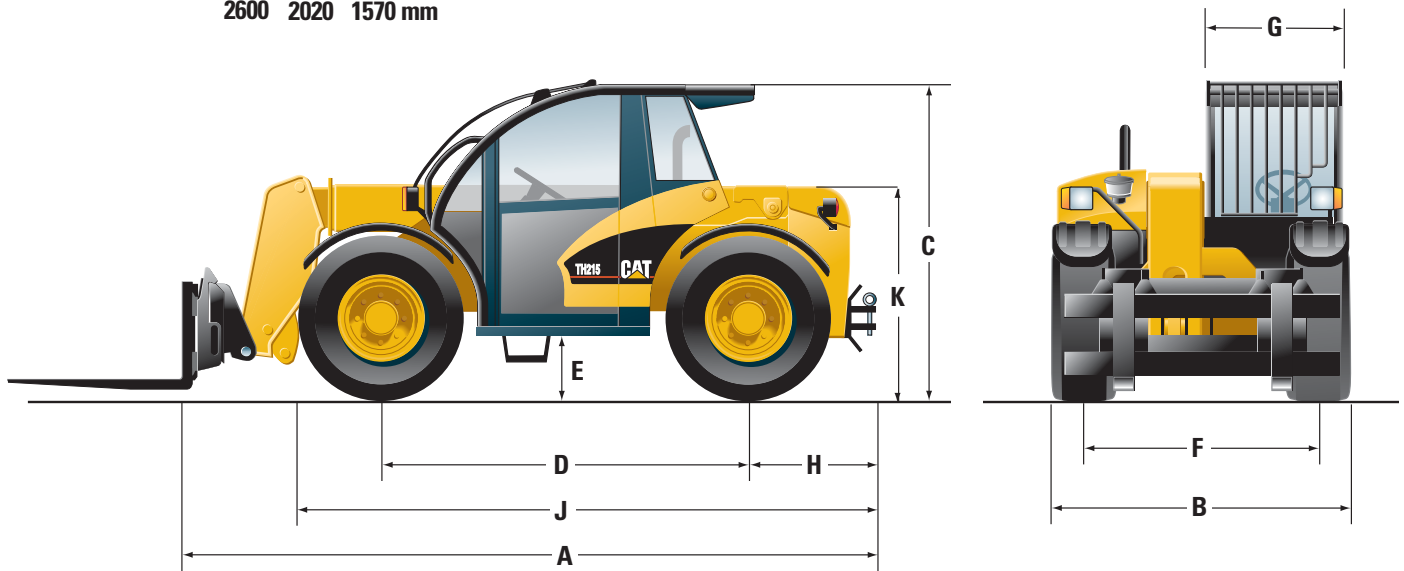
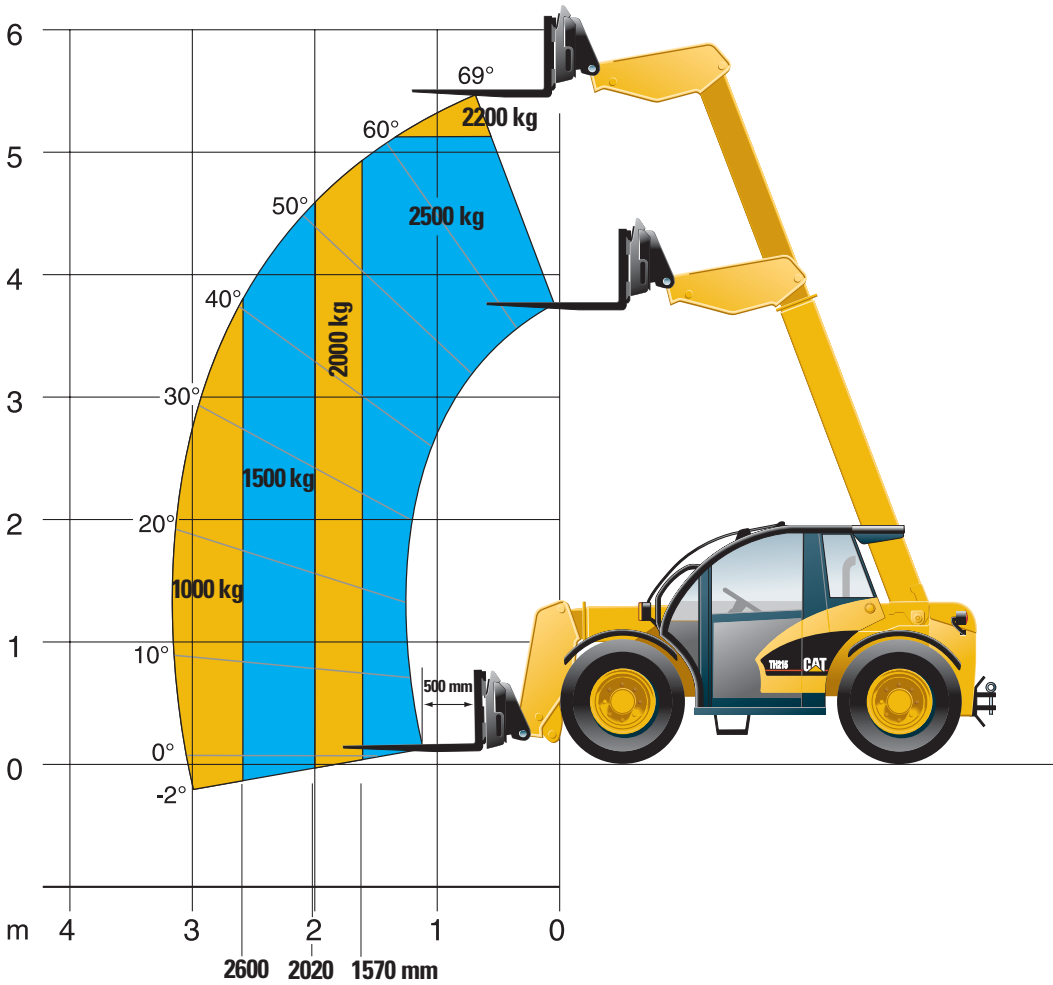
## Service Refill Capacities

Fuel Tank	85 liters
Hydraulic Tank	55 liters

## Weights

Operating Weight	5500 kg
------------------	---------

# Load Charts and Dimensions



<b>A</b> Length to Carriage	4200 mm	<b>F</b> Track	1564 mm
<b>B</b> Width	1900 mm	<b>G</b> Cab Width	845 mm
<b>C</b> Height	2130 mm	<b>H</b> Rear Overhang	800 mm
<b>D</b> Wheelbase	2300 mm	<b>J</b> Length to Front of Tire	3700 mm
<b>E</b> Ground Clearance	400 mm	<b>K</b> Rear Boom Height	1365 mm

## Standard Equipment

Standard equipment may vary. Consult your Caterpillar dealer for specifics.

### Power Train

Cat 3054B-DI diesel engine  
Dual element air cleaner with filter condition indicator  
Water separator  
Hydrostatic Transmission  
Column mounted control for transmission direction  
Spin-on engine and transmission oil filters  
Planetary drive axles with full-time mechanical four wheel drive  
Limited Slip Differential in front axle  
Steer cylinder protected above axles  
Three steering modes: circle, crab and two-wheel front steer  
Enclosed oil disc brakes on front axle  
Power assisted, hydraulic brake system  
Foot pedal operated parking brake

### Other Standard Equipment

Integral lift and tie-down points  
Fenders on all tires  
Radiator dust screen

### Hydraulics

Joystick boom control  
5 micron spin-on hydraulic filter  
O-ring seal fittings

### Antifreeze

Extended life Antifreeze -37°C

### Telescopic Boom

2 section boom with non-metallic wear pads  
Lock valves on hydraulic cylinders  
Manual Coupler  
Coupler tilt angle maintained automatically throughout boom range

### Electrical

12 volt electrical start  
65 ampere alternator  
750 CCA maintenance-free battery with Battery disconnect switch  
Anti-restart key switch  
Horn

### Tires

12.5/20 Goodyear MPT

### Operator Environment

FOPS/ROPS certified cab  
Low step and grab bars for easy entry  
2 piece entry door  
Cab isolated on rubber mounts  
Power steering  
Illuminated gauges for engine temperature, transmission oil temperature and fuel level  
Warning light for alternator output and engine oil pressure  
Tachometer  
Rear window wiper  
Cab worklights  
Right-side rear view mirror  
Service hour meter  
Floor mat

## Optional Equipment

Optional equipment may vary. Consult your Caterpillar dealer for specifics.

### Operator Environment

Cab/Canopy Accessories  
Air conditioning  
Air suspension seat  
Additional mirror

### Air Intake

Cap, Pre-cleaner

### Hydraulic Services

Auxiliary to boom head  
Rear auxiliary service (for trailer tipping or hand held work tool operation)  
Hydraulic trailer braking

### Other Attachments

Clevis tow hitch  
Hydraulic tow hitch

### Tires

375/75R20 Michelin XZSL  
12.5/80R20 Michelin XM37

### Electrical

Lights, Boom  
Additional Cab work lights  
Lights, Rooding (RHD or LHD).  
Includes: Single beam headlights, front and rear running lights and turn signal, stop and tail lights, reversing light, rear fog light.  
Beacon, magnetic mount

### Antifreeze

Antifreeze, -50°C

### Work Tools

Buckets  
Light Material 2.0 m<sup>3</sup>  
General Purpose 0.75 m<sup>3</sup>  
Carriage  
Standard class II hook carriage  
Forks  
Pallet Fork 1120 mm class II (50 x 100 mm) hook type  
Pallet Fork 1220 mm (40 x 100 mm) hook type  
Pallet Fork 1067 mm

# TH215 Compact Telehandler

HEHB2696 (09/2002) hr

Materials and specifications are subject to change without notice.  
Featured machines may include additional equipment.  
See your Caterpillar dealer for available options.

[www.CAT.com](http://www.CAT.com)  
© 2002 Caterpillar

**CATERPILLAR**<sup>®</sup>