



WHEELED EXCAVATOR **WX240 - Series 2**



Engine Horsepower	129 kW - 173 hp
Max Operating weight	24300 kg
Bucket	0.47 m ³ to 1.85 m ³

MAINTENANCE CENTRE

Case WX series wheeled excavators are powered by the latest Family III Case diesel engines. Extended 500 hour service intervals are standard across the range, providing minimal downtime and maximum productivity. A purpose designed catwalk provides easy access to all service and diagnostic points. Ecological oil drain plugs cut the risk of ground contamination during regular service and repair.

Service access. Reduced downtime.



COMFORT CAB

The WX240 has outstanding visibility all around the machine, thanks to a large glazed area and transparent roof panel. An air suspension seat and tilting steering column ensure that operators of all sizes can find a comfortable operating position, reducing fatigue and increasing productivity throughout the day. A direction control switch on the joystick, along with automatic brakes and front axle lock, reduce operator effort. The Case Digipower management and fine grading mode, in combination with dozer blade and stabiliser fine controls on the joystick, allow the operator total control of the machine in all applications.

Increased control. Reduced fatigue.

POWER TO PERFORM

With a compact upperstructure and well balanced design, the WX machines offer high lifting and digging performance. Fully independent dozer blade and stabiliser control, and mechanically lockable stabiliser pads, give the machine a solid working platform. High engine output with Power Boost function ensures total productivity. PowerShift transmission provides optional travel speeds of 25 kph with gear shifting on the move, yet retains best in class tractive effort for dozing. Two quick couplers available: one only for WX240 buckets and one to use both WX240 and CX240 buckets, to increase machine versatility and operator acceptance.

Stable platform. All round productivity.



SAFE DESIGN

Case inching and extra slow speed setting and road travel mode with swing and attachment cut-out, ensure safe operation in all site conditions. Automatic battery cut-off and engine warm-up system reduce the risk of damage to the engine and hydraulic system at start-up. Audible and visual warnings for the axle lock assist the operator, while a large stabiliser foot print provides total stability on rough ground.

Stable base. Maximum performance.

ENGINE



The WX240 uses a six cylinder Case engine for maximum torque and smooth power. This EU Tier III compliant engine is turbocharged and intercooled for optimised clean combustion and high power output. The engine has been designed for maximum reliability and durability, with an auto warm-up feature ensuring long service life and reduced downtime.

UNDERCARRIAGE



The WX has a two speed transmission providing an optional maximum travel speed between job sites of 25 kph. Ground clearance can be increased with the option of a two-piece drive shaft, offering improved off-road capability for maximum versatility on site. As with all Case WX machines the WX240 has the Case inching control, allowing the operator to gradually move the machine for safe and accurate positioning. The machine is available with a choice of wheel configurations, allowing customers to tailor the layout to meet their individual application.

VISIBILITY



Large glass area with two-piece full height windscreen offers class leading levels of visibility all around the machine. The operator has a clear view to the work area when digging and loading, and to the road ahead when driving the machine between job sites. A low engine canopy to the rear of the excavator ensures maximum manoeuvrability on confined sites.

OPERATOR'S CAB

Spacious operator cab with ergonomic design has large tinted glass area for class-leading all round visibility, ensuring safe operation on site. A large roof window with standard shade, fully adjustable suspension seat, optional air conditioning, adjustable tilt steering column and exceptionally low internal noise and vibration levels provide the operator with ideal working conditions, reducing fatigue and boosting productivity.

The comprehensive LCD display provides a clear readout of all operating information and diagnostic functions, along with an integrated working mode display. Auxiliary operating controls, including travel direction, attachment and blade/stabiliser selection, levelling mode and power boost function are integrated into the joystick levers, reducing operator effort and ensuring total control of the machine.



HYDRAULICS



The WX240 features a well laid out, easy to maintain hydraulic control valve. The Case Digipower hydraulic control system monitors the main pumps and regulates engine power to meet the needs of the operator. All WX machines offer a range of selectable power levels, or working modes, for specific digging and lifting tasks. These include a levelling mode for fine grading and lifting tasks. PowerBoost is standard in the lifting modes and works for 8 seconds in all other modes according to operator demand.

STABILIZERS



With the modular design of the Case WX chassis, customers can choose between stabilisers, a dozer blade or a combination of the two. The stabilisers and dozer blade are independently controlled, to allow for machine levelling on rough ground.

ACCESSIBILITY



The machine retains the Case access catwalk behind the cab. The service engineer has unparalleled access to all regular service and maintenance points and a safe area in which to work. The top of the engine, the hydraulic valves and the cooling pack are easily accessible through the large lift up canopy.



SPECIFICATIONS

ENGINE

Make _____ CASE - Family III
 Model _____ 667TA/MEE
 Type _____ 6 cyl. turbo charged, direct injection, intercooler
 Displacement _____ 6.7 l
 Bore x stroke _____ 104 x 132 mm
 Output power (ISO 14396) _____ 129 kW/173 hp
 Rated speed _____ 2000 rpm

HYDRAULIC SYSTEM

Main pumps _____ 3 variable displacement, axial piston
 Total maximum flow _____ 2 x 208 lpm + 137 lpm
 Attachment maximum pressure/PowerBoost _____ 350/370 bar
 Travel maximum pressure _____ 370 bar
 Swing maximum pressure _____ 390 bar

SWING

Swing speed _____ 9.5 rpm
 Swing torque _____ 66 kNm
 Tail swing radius _____ 2.75 m

TRAVEL

Maximum travel speed (field range) _____ 8 km/h
 Maximum travel speed (road range) _____ 20 or 25 km/h
 Maximum drawbar pull (field range) _____ 130 kN

ELECTRICAL SYSTEM

Voltage _____ 24 V
 Batteries _____ 2 x 12 V - 100 Ah
 Alternator _____ 70 A
 Automatic isolator switch and 12 V power supply in cab as standard.

CIRCUIT AND COMPONENT CAPACITIES

Engine oil _____ 16 l
 Cooling circuit _____ 30 l
 Fuel tank _____ 325 l
 Hydraulic tank _____ 160 l
 Swing gear _____ 4 l

TYRES

4 wheels _____ 18 - 22.5 XF
 8 wheels with twinning rings _____ 10.00 - 20
 _____ 11.00 - 20
 _____ 600/40 - 22.5

SHIPPING DIMENSIONS AND WEIGHT

MONOBOOM

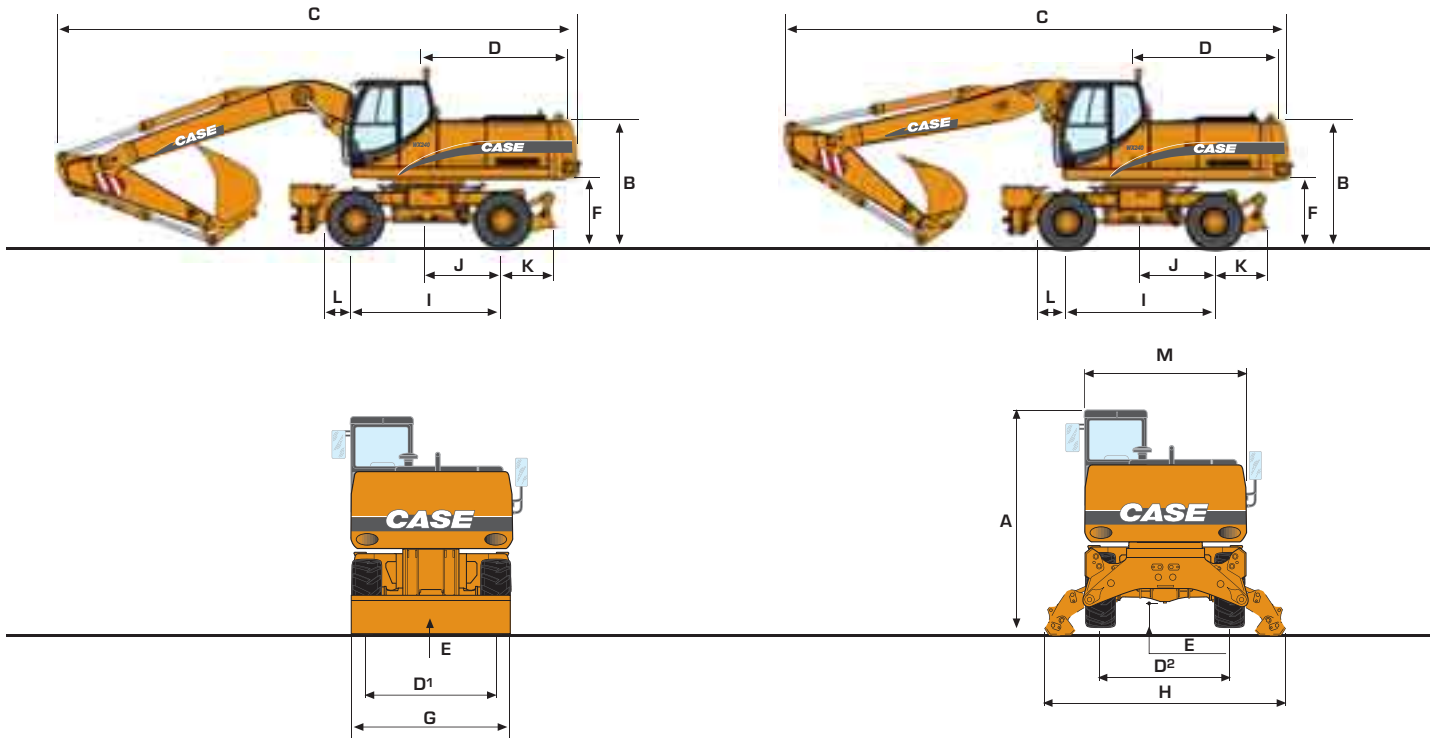
	Any configurations		Without attachment		PL Rear blade		P2A Rear Stabilisers		P2AL Front Blade + 2 Stab.		P4A Front and rear stab.	
	max length mm	max height mm	cwt 3.8 t kg	cwt 5.0 t kg	cwt 3.8 t kg	cwt 5.0 t kg	cwt 3.8 t kg	cwt 5.0 t kg	cwt 3.8 t kg	cwt 5.0 t kg	cwt 3.8 t kg	cwt 5.0 t kg
Dipper 2.30 m	9700	3150	20000	21200	20500	21700	21100	22300	21600	22800	22200	23500
Dipper 2.60 m	9700	3150	20050	21250	20550	21750	21150	22350	21650	22850	22250	23550
Dipper 2.90 m	9700	3150	20100	21300	20600	21800	21200	22400	21700	22900	22300	23600

ARTICULATED BOOM

	Any configurations		Without attachment		PL Rear blade		P2A Rear Stabilisers		P2AL Front Blade + 2 Stab.		P4A Front and rear stab.	
	max length mm	max height mm	cwt 3.8 t kg	cwt 5.0 t kg	cwt 3.8 t kg	cwt 5.0 t kg	cwt 3.8 t kg	cwt 5.0 t kg	cwt 3.8 t kg	cwt 5.0 t kg	cwt 3.8 t kg	cwt 5.0 t kg
Dipper 2.30 m	9450	3150	20800	22000	21300	22500	21900	23100	22400	23600	23000	24200
Dipper 2.60 m	9450	3150	20850	22050	21350	22550	21950	23150	22450	23650	23050	24250
Dipper 2.90 m	9450	3150	20900	22100	21400	22600	22000	23200	22500	23700	23100	24300

Weights are indicated fitted with a 950 kg bucket

GENERAL DIMENSIONS



			MONOBOOM	ARTICULATED BOOM
A	Overall height (with attachment)	m	3.15	3.15
B	Height of machine	m	2.42	2.42
C	Overall length	m	9.68	9.43
D	Swing tail radius	m	2.75	2.75
D¹	Gauge with 4 wheels	m	2.10	2.10
D²	Gauge with 8 wheels	m	2.14	2.14
E	Ground clearance of undercarriage	m	0.37	0.37
F	Ground clearance of uppercarriage	m	1.30	1.30
G	Width unit blade/stabilizers	m	2.74	2.74
H	Width over stabs (max height)	m	4.26	4.26
I	Wheel base	m	2.75	2.75
J	Dimension rear axle to center Undercarriage rear		1.37	1.37
K	Rear blade	m	1.05	1.05
L	Undercarriage front end	m	0.60	0.60
M	Width of uppercarriage	m	2.74	2.74

Tires type 600/40 - 22,5 I-331 Alliance
Gauge 2.75 m.

BUCKETS

GENERAL PURPOSE

SAE capacity	l	480	660	840	1080	1210	1400	1590	1850
Width	mm	600	750	900	1100	1200	1350	1500	1700
Weight	kg	663	731	819	909	975	1043	1131	1259

HEAVY DUTY

SAE capacity	l	480	660	840	1080	1210	1400	1590	1850
Width	mm	600	750	900	1100	1200	1350	1500	1700
Weight	kg	699	767	856	947	1014	1082	1171	1299

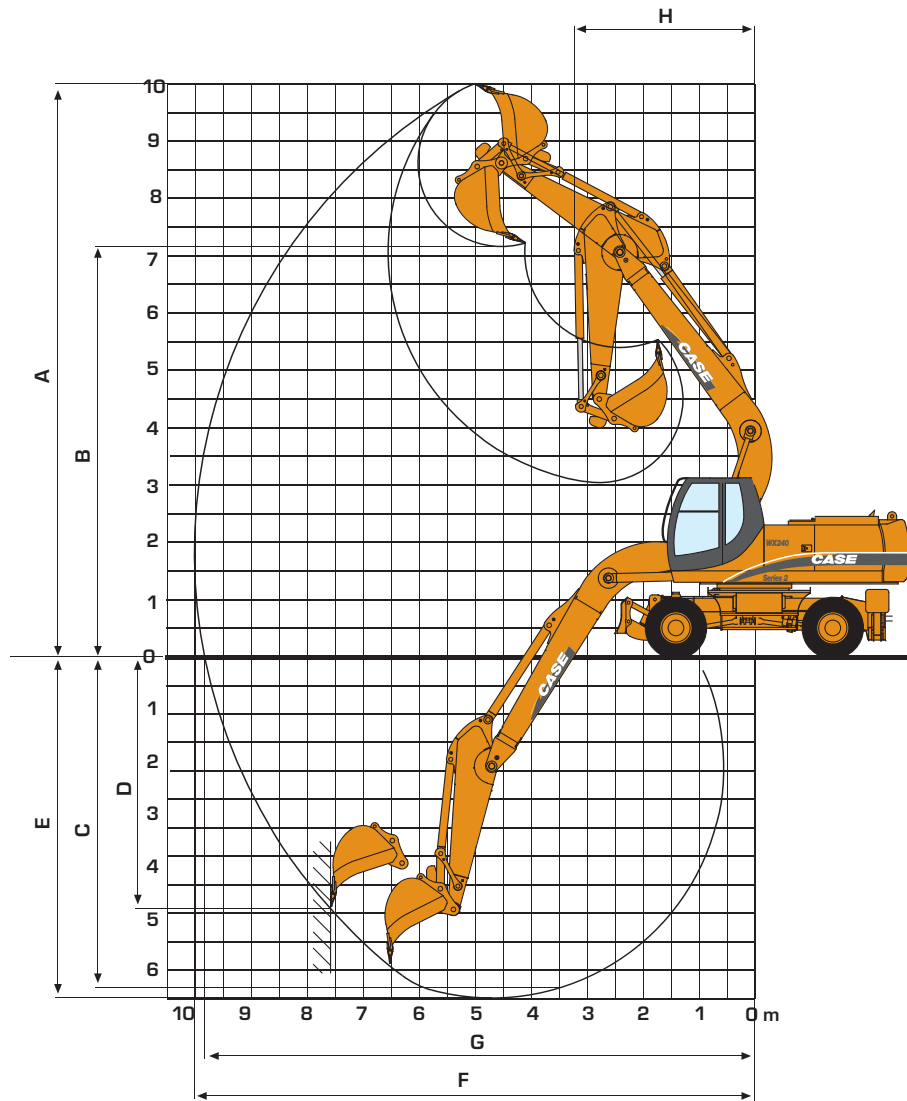
ROCK BUCKET

SAE capacity	l	480	660	840	1080	1210	1400	1590
Width	mm	600	750	900	1100	1200	1350	1500
Weight	kg	749	819	914	1007	1054	1149	1219

DITCH CLEANING WITH BLADE

SAE capacity	l	1480
Width	mm	2130
Weight	kg	1016

PERFORMANCE DATA



DIPPERSTICK	MONO BOOM 5.60 m			ARTICULATED BOOM 5.50 m			
	2.30 m	2.60 m	2.90 m	2.30 m	2.60 m	2.90 m	
A Max. digging height	m	10.2	10.2	10.4	10.1	10.2	10.4
B Max. loading height	m	7.0	7.0	7.2	7.3	7.4	7.6
C Max. digging depth	m	5.8	6.1	6.4	5.7	6.0	6.3
D Max. vert. wall digging depth	m	4.1	4.0	4.2	4.2	4.3	4.5
E Max. depth of cut for 8' level bottom	m	5.6	5.9	6.2	5.6	5.9	6.2
F Max. digging reach	m	9.7	10.0	10.2	9.4	9.6	9.9
G Max. digging reach at ground level	m	9.6	9.8	10.1	9.2	9.5	9.7
H Min. front swing radius	m	3.2	2.9	2.6	3.2	3.1	3.2
Bucket breakout force (370 bar) SAE	kN	162.3	162.3	162.3	162.3	162.3	162.3
Stick crowd force (370 bar) SAE	kN	136.1	123.8	115.3	136.1	123.8	115.3

LIFTING CAPACITY

MONO BOOM

Values are expressed in tons

Front 90°	REACH									
	3.0 m		4.5 m		6.0 m		7.5 m		At max reach	

2.30 m dipper, 0.70 m³-600 kg bucket (CECE), counterweight 5.00 t

7.5 m	Rear dozer up					5.5	4.0			5.2	3.7	6.2
	Rear dozer down					6.5*	4.4			5.8*	4.1	6.2
	2 set stabs down					6.5*	5.5			5.8*	5.1	6.2
	Dozer and stabs down					6.5*	6.5*			5.8*	5.8*	6.2
6.0 m	Rear dozer up					5.6	4.0			3.8	2.7	7.4
	Rear dozer down					6.3*	4.5			5.3*	3.0	7.4
	2 set stabs down					6.3*	5.5			5.3*	3.7	7.4
	Dozer and stabs down					6.3*	6.3*			5.3*	5.0	7.4
4.5 m	Rear dozer up			8.5*	6.3	5.4	3.9	3.6	2.6	3.2	2.2	8.1
	Rear dozer down			8.5*	7.0	7.0*	4.3	6.3*	2.9	5.2*	2.4	8.1
	2 set stabs down			8.5*	8.5*	7.0*	5.4	6.3*	3.6	5.2*	3.1	8.1
	Dozer and stabs down			8.5*	8.5*	7.0*	7.0	6.3*	4.8	5.2*	4.2	8.1
3.0 m	Rear dozer up			8.1	5.6	5.1	3.6	3.5	2.4	2.8	1.9	8.4
	Rear dozer down			11.0*	6.3	8.1*	4.0	6.6	2.8	5.3	2.2	8.4
	2 set stabs down			11.0*	8.0	8.1*	5.1	6.7	3.5	5.3*	2.8	8.4
	Dozer and stabs down			11.0*	10.8	8.1*	6.7	6.7*	4.7	5.3*	3.8	8.4
1.5 m	Rear dozer up			7.4	5.0	4.8	3.3	3.4	2.3	2.7	1.8	8.5
	Rear dozer down			12.9*	5.7	9.1*	3.7	6.4	2.6	5.2	2.1	8.5
	2 set stabs down			12.9*	7.3	9.1*	4.8	6.5	3.4	5.2	2.7	8.5
	Dozer and stabs down			12.9*	10.1	9.1*	6.4	7.0	4.5	5.6	3.6	8.5
0.0 m	Rear dozer up			7.1	4.8	4.6	3.1	3.3	2.2	2.8	1.9	8.3
	Rear dozer down			13.4*	5.4	9.2	3.6	6.3	2.5	5.3	2.1	8.3
	2 set stabs down			13.4*	7.0	9.3	4.6	6.4	3.3	5.4	2.8	8.3
	Dozer and stabs down			13.4*	9.8	9.6*	6.2	6.9	4.4	5.8	3.7	8.3
-1.5 m	Rear dozer up	9.4*	9.0	7.1	4.7	4.6	3.1	3.3	2.2	3.1	2.1	7.8
	Rear dozer down	9.4*	9.4*	12.9*	5.4	9.1	3.5	6.3	2.5	5.9	2.3	7.8
	2 set stabs down	9.4*	9.4*	12.9*	7.0	9.2	4.5	6.4	3.2	6.0	3.0	7.8
	Dozer and stabs down	9.4*	9.4*	12.9*	9.7	9.4*	6.1	6.8	4.4	6.4	4.1	7.8
-3.0 m	Rear dozer up	14.7	9.3	7.2	4.8	4.6	3.1			3.8	2.6	6.9
	Rear dozer down	15.6*	10.7	11.3*	5.5	8.2*	3.5			6.4*	2.9	6.9
	2 set stabs down	15.6*	14.6	11.3*	7.1	8.2*	4.6			6.4*	3.7	6.9
	Dozer and stabs down	15.6*	15.6*	11.3*	9.9	8.2*	6.2			6.4*	5.0	6.9
-4.5 m	Rear dozer up			7.9*	5.1							
	Rear dozer down			7.9*	5.7							
	2 set stabs down			7.9*	7.4							
	Dozer and stabs down			7.9*	7.9*							

* Hydraulically limited

The 5 tons counterweight is not allowed on roads

LIFTING CAPACITY

MONO BOOM

Values are expressed in tons

Front 90°	REACH									
	3.0 m		4.5 m		6.0 m		7.5 m		At max reach	

2.60 m dipper, 0.70 m³ - 600 kg bucket (CECE), counterweight 5.00 t

7.5 m	Rear dozer up					5.6	4.1			4.6*	3.5	6.5
	Rear dozer down					5.9*	4.5			4.6*	3.9	6.5
	2 set stabs down					5.9*	5.6			4.6*	4.6*	6.5
	Dozer and stabs down					5.9*	5.9*			4.6*	4.6*	6.5
6.0 m	Rear dozer up					5.6	4.1	3.7	2.6	3.6	2.5	7.6
	Rear dozer down					5.9*	4.5	4.8*	2.9	4.2*	2.8	7.6
	2 set stabs down					5.9*	5.6	4.8*	3.6	4.2*	3.6	7.6
	Dozer and stabs down					5.9*	5.9*	4.8*	4.8	4.2*	4.2*	7.6
4.5 m	Rear dozer up			7.9*	6.4	5.5	3.9	3.7	2.6	3.0	2.1	8.3
	Rear dozer down			7.9*	7.1	6.7*	4.3	6.0*	2.9	4.2*	2.3	8.3
	2 set stabs down			7.9*	7.9*	6.7*	5.4	6.0	3.6	4.2*	3.0	8.3
	Dozer and stabs down			7.9*	7.9*	6.7*	6.7*	6.0	4.8	4.2*	4.0	8.3
3.0 m	Rear dozer up			8.2	5.7	5.1	3.6	3.5	2.4	2.7	1.8	8.6
	Rear dozer down			10.4*	6.4	7.8*	4.0	6.5*	2.7	4.3*	2.1	8.6
	2 set stabs down			10.4*	8.1	7.8*	5.1	6.5*	3.5	4.3*	2.7	8.6
	Dozer and stabs down			10.4*	10.4*	7.8*	6.8	6.5*	4.7	4.3*	3.6	8.6
1.5 m	Rear dozer up			7.5	5.1	4.8	3.3	3.4	2.3	2.6	1.7	8.7
	Rear dozer down			12.5*	5.7	8.8*	3.7	6.4	2.6	4.7*	2.0	8.7
	2 set stabs down			12.5*	7.4	8.8*	4.8	6.5	3.3	4.7*	2.6	8.7
	Dozer and stabs down			12.5*	10.2	8.8*	6.4	7.0	4.5	4.7*	3.5	8.7
0.0 m	Rear dozer up			7.1	4.7	4.6	3.1	3.3	2.2	2.7	1.7	8.5
	Rear dozer down			13.3*	5.4	9.1	3.5	6.3	2.5	5.1	2.0	8.5
	2 set stabs down			13.3*	7.0	9.3	4.5	6.4	3.2	5.1	2.6	8.5
	Dozer and stabs down			13.3*	9.8	9.4*	6.2	6.8	4.4	5.3*	3.6	8.5
-1.5 m	Rear dozer up	9.9*	8.9	7.0	4.6	4.5	3.0	3.2	2.1	2.9	1.9	8.0
	Rear dozer down	9.9*	9.9*	13.0*	5.3	9.0	3.4	6.2	2.4	5.6	2.2	8.0
	2 set stabs down	9.9*	9.9*	13.0*	6.9	9.2	4.4	6.3	3.2	5.7	2.9	8.0
	Dozer and stabs down	9.9*	9.9*	13.0*	9.7	9.4*	6.1	6.8	4.3	6.1	3.9	8.0
-3.0 m	Rear dozer up	14.5	9.1	7.1	4.7	4.5	3.0			3.5	2.3	7.2
	Rear dozer down	16.2*	10.6	11.6*	5.4	8.5*	3.5			6.4*	2.7	7.2
	2 set stabs down	16.2*	14.4	11.6*	7.0	8.5*	4.5			6.4*	3.4	7.2
	Dozer and stabs down	16.2*	16.2*	11.6*	9.8	8.5*	6.1			6.4*	4.7	7.2
-4.5 m	Rear dozer up			7.3	4.9					5.0	3.4	5.8
	Rear dozer down			8.7*	5.6					6.1*	3.9	5.8
	2 set stabs down			8.7*	7.2					6.1*	4.9	5.8
	Dozer and stabs down			8.7*	8.7*					6.1*	6.1*	5.8

* Hydraulically limited

The 5 tons counterweight is not allowed on roads

LIFTING CAPACITY

MONO BOOM

Values are expressed in tons

Front 90°	REACH									
	3.0 m		4.5 m		6.0 m		7.5 m		At max reach	

2.90 m dipper, 0.70 m³ - 600 kg bucket (CECE), counterweight 5.00 t

7.5 m	Rear dozer up					5.5*	4.1			4.0*	3.1	6.8
	Rear dozer down					5.5*	4.6			4.0*	3.5	6.8
	2 set stabs down					5.5*	5.5*			4.0*	4.0*	6.8
	Dozer and stabs down					5.5*	5.5*			4.0*	4.0*	6.8
6.0 m	Rear dozer up					5.6*	4.1	3.7	2.6	3.3	2.3	7.9
	Rear dozer down					5.6*	4.6	5.3*	2.9	3.7*	2.6	7.9
	2 set stabs down					5.6*	5.6*	5.3*	3.7	3.7*	3.3	7.9
	Dozer and stabs down					5.6*	5.6*	5.3*	4.9	3.7*	3.7*	7.9
4.5 m	Rear dozer up			7.3*	6.5	5.5	3.9	3.7	2.6	2.8	1.9	8.6
	Rear dozer down			7.3*	7.2	6.3*	4.4	5.7*	2.9	3.7*	2.2	8.6
	2 set stabs down			7.3*	7.3*	6.3*	5.4	5.7*	3.6	3.7*	2.8	8.6
	Dozer and stabs down			7.3*	7.3*	6.3*	6.3*	5.7*	4.8	3.7*	3.7*	8.6
3.0 m	Rear dozer up			8.3	5.8	5.2	3.7	3.5	2.4	2.5	1.7	8.9
	Rear dozer down			9.8*	6.5	7.4*	4.1	6.2*	2.8	3.8*	1.9	8.9
	2 set stabs down			9.8*	8.2	7.4*	5.1	6.2*	3.5	3.8*	2.5	8.9
	Dozer and stabs down			9.8*	9.8*	7.4*	6.8	6.2*	4.7	3.8*	3.4	8.9
1.5 m	Rear dozer up			7.5	5.1	4.8	3.3	3.4	2.3	2.4	1.6	9.0
	Rear dozer down			12.1*	5.8	8.5*	3.8	6.4	2.6	4.1*	1.8	9.0
	2 set stabs down			12.1*	7.5	8.5*	4.8	6.5	3.3	4.1*	2.4	9.0
	Dozer and stabs down			12.1*	10.3	8.5*	6.4	6.8*	4.5	4.1*	3.3	9.0
0.0 m	Rear dozer up	5.5*	5.5*	7.1	4.7	4.6	3.1	3.2	2.2	2.5	1.6	8.8
	Rear dozer down	5.5*	5.5*	13.2*	5.4	9.1	3.5	2.6	2.5	4.6*	1.9	8.8
	2 set stabs down	5.5*	5.5*	13.2*	7.0	9.3	4.5	6.3	3.2	4.6*	2.4	8.8
	Dozer and stabs down	5.5*	5.5*	13.2*	9.8	9.3*	6.2	6.8	4.3	4.6*	3.3	8.8
-1.5 m	Rear dozer up	9.5*	8.8	6.9	4.6	6.5	3.0	3.2	2.1	2.7	1.8	8.3
	Rear dozer down	9.5*	9.5*	13.1*	5.2	9.0	3.4	6.2	2.4	5.2	2.0	8.3
	2 set stabs down	9.5*	9.5*	13.1*	6.9	9.1	4.4	6.3	3.1	5.3	2.7	8.3
	Dozer and stabs down	9.5*	9.5*	13.1*	9.6	9.4*	6.0	6.7	4.3	5.5*	3.6	8.3
-3.0 m	Rear dozer up	14.3	9.0	7.0	4.6	4.5	3.0	3.2	2.1	3.2	2.1	7.5
	Rear dozer down	14.9*	10.4	12.0*	5.3	8.7*	3.4	6.2	2.4	6.1	2.4	7.5
	2 set stabs down	14.9*	14.2	12.0*	6.9	8.7*	4.4	6.2*	3.2	6.1*	3.2	7.5
	Dozer and stabs down	14.9*	14.9*	12.0*	9.7	8.7*	6.0	6.2*	4.3	6.1*	4.3	7.5
-4.5 m	Rear dozer up	13.4*	9.4	7.2	4.8	4.6	3.1			4.4	3.0	6.2
	Rear dozer down	13.4*	10.8	9.4*	5.5	6.5*	3.6			6.0*	3.4	6.2
	2 set stabs down	13.4*	13.4*	9.4*	7.1	6.5*	4.6			6.0*	4.4	6.2
	Dozer and stabs down	13.4*	13.4*	9.4*	9.4*	6.5*	6.2			6.0*	5.9	6.2

* Hydraulically limited

The 5 tons counterweight is not allowed on roads





LIFTING CAPACITY

ARTICULATED BOOM

Values are expressed in tons

Front 90°	REACH											
	3.0 m		4.5 m		6.0 m		7.5 m		At max reach		m	
2.30 m dipper, 0.70 m³ - 600 kg bucket (CECE), counterweight 5.00 t												
6.0 m	Rear dozer up			6.5*	6.5*	5.7	4.3			4.0	2.8	7.2
	Rear dozer down			6.5*	6.5*	5.9*	4.7			4.3*	3.2	7.2
	2 set stabs down			6.5*	6.5*	5.9*	5.7			4.3*	4.0	7.2
	Dozer and stabs down			6.5*	6.5*	5.9*	5.9*			4.3*	4.3*	7.2
4.5 m	Rear dozer up			7.9*	6.6	5.7	4.3	3.7	2.6	3.3	2.3	7.9
	Rear dozer down			7.6*	7.3	6.2*	4.6	5.8*	2.9	4.0*	2.6	7.9
	2 set stabs down			7.6*	7.6*	6.2*	5.6	5.8*	3.7	4.0*	3.3	7.9
	Dozer and stabs down			7.6*	7.6*	6.2*	6.2*	5.8*	4.9	4.0*	4.0*	7.9
3.0 m	Rear dozer up			8.6	6.4	5.6	4.2	3.7	2.6	3.0	2.0	8.3
	Rear dozer down			9.4*	7.0	7.2*	4.6	6.1*	2.9	3.7*	2.3	8.3
	2 set stabs down			9.4*	8.5	7.2*	5.5	6.1*	3.7	3.7*	2.9	8.3
	Dozer and stabs down			9.4*	9.4*	7.2*	7.0	6.1*	4.9	3.7*	3.7*	8.3
1.5 m	Rear dozer up	14.9*	11.6*	8.5	6.3	5.6	4.2	3.6	2.5	2.9	1.9	8.3
	Rear dozer down	14.9*	12.8	11.8*	6.9	8.2*	4.6	6.7	2.8	4.5*	2.2	8.3
	2 set stabs down	14.9*	14.9*	11.8*	8.4	8.2*	5.5	6.7*	3.6	4.5*	2.8	8.3
	Dozer and stabs down	14.9*	14.9*	11.8*	10.8	8.2*	7.0	6.7*	4.8	4.5*	3.8	8.3
0.0 m	Rear dozer up	16.5	11.6	8.5	6.2	5.5	3.9	3.5	2.4	2.9	1.9	8.1
	Rear dozer down	18.0*	13.0	13.3*	7.0	9.2*	4.4	6.6	2.7	4.9*	2.2	8.1
	2 set stabs down	18.0*	16.5	13.3*	8.5	9.2*	5.4	6.7	3.4	4.9*	2.9	8.1
	Dozer and stabs down	18.0*	18.0*	13.3*	10.9	9.2*	7.1	7.2	4.6	4.9*	3.9	8.1
-1.5 m	Rear dozer up	16.8*	11.0	8.4	5.9	5.1	3.6	3.3	2.2	3.3	2.2	7.6
	Rear dozer down	21.9*	12.6	13.5*	6.6	9.6	4.0	5.9*	2.5	5.8*	2.5	7.6
	2 set stabs down	21.9*	16.7	13.5*	8.3	9.6	5.1	5.9*	3.3	5.8*	3.2	7.6
	Dozer and stabs down	21.9*	21.9*	13.5*	11.3	9.6*	6.8	5.9*	4.5	5.8*	4.4	7.6
-3.0 m	Rear dozer up	16.6	10.8	8.0	5.5	4.8	3.3			4.0	2.7	6.7
	Rear dozer down	23.0*	12.4	14.1*	6.2	9.1*	3.7			6.6*	3.1	6.7
	2 set stabs down	23.0*	16.5	14.1*	7.9	9.1*	4.8			6.6*	4.0	6.7
	Dozer and stabs down	23.0*	23.0*	14.1*	10.8	9.1*	6.5			6.6*	5.4	6.7
-4.5 m	Rear dozer up	16.1	10.4							9.8	6.6	3.9
	Rear dozer down	19.1*	11.9							12.8*	7.5	3.9
	2 set stabs down	19.1*	16.0							12.8*	9.7	3.9
	Dozer and stabs down	19.1*	19.1*							12.9*	12.8	3.9

* Hydraulically limited

The 5 tons counterweight is not allowed on roads

LIFTING CAPACITY

ARTICULATED BOOM

Values are expressed in tons

Front 90°	REACH									
	3.0 m		4.5 m		6.0 m		7.5 m		At max reach	

2.60 m dipper, 0.70 m³ - 600 kg bucket (CECE), counterweight 5.00 t

7.5 m	Rear dozer up					5.3*	4.1			4.7*	3.7	6.3
	Rear dozer down					5.3*	4.5			4.7*	4.2	6.3
	2 set stabs down					5.3*	5.3*			4.7*	4.7*	6.3
	Dozer and stabs down					5.3*	5.3*			4.7*	4.7*	6.3
6.0 m	Rear dozer up					5.5*	4.3			3.8	2.7	7.4
	Rear dozer down					5.5*	4.7			3.8*	3.0	7.4
	2 set stabs down					5.5*	5.5*			3.8*	3.8	7.4
	Dozer and stabs down					5.5*	5.5*			3.8*	3.8*	7.4
4.5 m	Rear dozer up			7.3*	6.7	5.7	4.2	3.8	2.7	3.2	2.2	8.1
	Rear dozer down			7.3*	7.3	6.1*	4.6	5.5*	3.0	3.6*	2.4	8.1
	2 set stabs down			7.3*	7.3*	6.1*	5.6	5.5*	3.8	3.6*	3.1	8.1
	Dozer and stabs down			7.3*	7.3*	6.1*	6.1*	5.5*	5.0	3.6*	3.6*	8.1
3.0 m	Rear dozer up	12.1*	11.9	8.6	6.4	5.6	4.2	3.8	2.7	2.8	1.9	8.5
	Rear dozer down	12.1*	12.1*	9.0*	7.0	6.9*	4.6	5.8*	3.0	3.5*	2.2	8.5
	2 set stabs down	12.1*	12.1*	9.0*	8.6	6.9*	5.5	5.8*	3.8	3.5*	2.8	8.5
	Dozer and stabs down	12.1*	12.1*	9.0*	9.0*	6.9*	6.9*	5.8*	4.9	3.5*	3.5*	8.5
1.5 m	Rear dozer up	15.1*	11.5	8.4	6.3	5.5	4.1	3.7	2.6	2.7	1.8	8.6
	Rear dozer down	15.1*	12.8	11.3*	6.9	7.9*	4.5	6.5*	2.9	4.1*	2.1	8.6
	2 set stabs down	15.1*	15.1*	11.3*	8.4	7.9*	5.5	6.5*	3.6	4.1*	2.7	8.6
	Dozer and stabs down	15.1*	15.1*	11.3*	10.8	7.9*	6.9	6.5*	4.8	4.1*	3.7	8.6
0.0 m	Rear dozer up	16.4	11.6	8.5	6.3	5.6	4.0	3.5	2.4	2.8	1.8	8.4
	Rear dozer down	17.6*	13.0	13.1*	6.9	9.0*	4.4	6.6	2.7	4.6*	2.1	8.4
	2 set stabs down	17.6*	16.3	13.1*	8.4	9.0*	5.5	6.7	3.5	4.6*	2.7	8.4
	Dozer and stabs down	17.6*	17.6*	13.1*	10.8	9.0*	7.0	7.0*	4.7	4.6*	3.7	8.4
-1.5 m	Rear dozer up	16.8	11.0	8.4	5.9	5.1	3.6	3.3	2.2	3.0	2.0	7.9
	Rear dozer down	21.4*	12.6	13.4*	6.6	9.5	4.0	6.4	2.5	5.3*	2.3	7.9
	2 set stabs down	21.4*	16.7	13.4*	8.3	9.5	5.1	6.5	3.3	5.3*	3.0	7.9
	Dozer and stabs down	21.4*	21.4*	13.4*	11.1	9.5*	6.8	7.0	4.5	5.3*	4.1	7.9
-3.0 m	Rear dozer up	16.5	10.7	8.0	5.5	4.8	3.3			3.7	2.5	7.0
	Rear dozer down	22.6*	12.3	13.8*	6.2	9.5	3.7			6.6*	2.8	7.0
	2 set stabs down	22.6*	16.4	13.8*	7.9	9.5*	4.8			6.6*	3.7	7.0
	Dozer and stabs down	22.6*	22.6*	13.8*	10.9	9.5*	6.4			6.6*	5.0	7.0
-4.5 m	Rear dozer up	16.0	10.3	7.7	5.2					6.7	4.6	4.9
	Rear dozer down	21.0*	11.8	11.3*	5.9					9.6*	5.2	4.9
	2 set stabs down	21.0*	15.9	11.3*	7.6					9.6*	6.7	4.9
	Dozer and stabs down	21.0*	21.0*	11.3*	10.5					9.6*	9.1	4.9

* Hydraulically limited

The 5 tons counterweight is not allowed on roads

LIFTING CAPACITY

ARTICULATED BOOM

Values are expressed in tons

 Front  90°	REACH									
	3.0 m		4.5 m		6.0 m		7.5 m		At max reach	

2.90 m dipper, 0.70 m³ - 600 kg bucket (CECE), counterweight 5.00 t

7.5 m	Rear dozer up					5.2*	4.2			4.1*	3.4	6.6
	Rear dozer down					5.2*	4.7			4.1*	3.7	6.6
	2 set stabs down					5.2*	5.2*			4.1*	4.1*	6.6
	Dozer and stabs down					5.2*	5.2*			4.1*	4.1*	6.6
6.0 m	Rear dozer up					5.2*	4.3	3.8	2.7	3.5	2.4	7.7
	Rear dozer down					5.2*	4.7	4.4*	3.0	3.6*	2.8	7.7
	2 set stabs down					5.2*	5.2*	4.4*	3.7	3.6*	3.5	7.7
	Dozer and stabs down					5.2*	5.2*	4.4*	4.4*	3.6*	3.6*	7.7
4.5 m	Rear dozer up			6.8*	6.7	5.7	4.2	3.9	2.8	3.0	2.0	8.4
	Rear dozer down			6.8*	6.8*	5.7*	4.7	5.1*	3.1	3.3*	2.3	8.4
	2 set stabs down			6.8*	6.8*	5.7*	5.6	5.1*	3.8	3.3*	2.9	8.4
	Dozer and stabs down			6.8*	6.8*	5.7*	5.7*	5.1*	5.0	3.3*	3.3*	8.4
3.0 m	Rear dozer up	11.5*	11.5*	8.6	6.4	5.6	4.1	3.9	2.7	2.7	1.8	8.8
	Rear dozer down	11.5*	11.5*	8.6*	7.0	6.5*	4.5	5.6*	3.1	3.2*	2.0	8.8
	2 set stabs down	11.5*	11.5*	8.6*	8.6	6.5*	5.5	5.6*	3.8	3.2*	2.6	8.8
	Dozer and stabs down	11.5*	11.5*	8.6*	8.6*	6.5*	6.5*	5.6*	5.0	3.2*	3.2*	8.8
1.5 m	Rear dozer up	14.6*	11.4	8.4	6.2	5.5	4.1	3.8	2.6	2.6	1.7	8.8
	Rear dozer down	14.6*	12.7	10.8*	6.8	7.6*	4.5	6.2*	2.9	3.7*	1.9	8.8
	2 set stabs down	14.6*	14.6*	10.8*	8.3	7.6*	5.4	6.2*	3.7	3.7*	2.5	8.8
	Dozer and stabs down	14.6*	14.6*	10.8*	10.8	7.6*	6.9	6.2*	4.9	3.7*	3.4	8.8
0.0 m	Rear dozer up	16.3	11.4	8.4	6.2	5.5	4.0	3.6	2.4	2.6	1.7	8.7
	Rear dozer down	17.1*	12.7	12.8*	6.8	8.7*	4.5	6.6	2.7	4.3*	1.9	8.7
	2 set stabs down	17.1*	16.3	12.8*	8.3	8.7*	5.5	6.7	3.5	4.3*	2.6	8.7
	Dozer and stabs down	17.1*	17.1*	12.8*	10.7	8.7*	6.9	6.8*	4.7	4.3*	3.5	8.7
-1.5 m	Rear dozer up	16.7	11.1	8.4	5.9	5.3	3.7	3.3	2.2	2.8	1.8	8.2
	Rear dozer down	20.7*	12.6	13.3*	6.6	9.4	4.1	6.5	2.5	4.9*	2.1	8.2
	2 set stabs down	20.7*	16.6	13.3*	8.4	9.4	5.2	6.6	3.3	4.9*	2.8	8.2
	Dozer and stabs down	20.7*	20.7*	13.3*	11.0	9.4*	6.9	7.0	4.5	4.9*	3.8	8.2
-3.0 m	Rear dozer up	16.5	10.7	8.1	5.6	4.9	3.3			3.4	2.2	7.3
	Rear dozer down	22.4*	12.3	13.6*	6.3	9.6	3.7			6.2*	2.6	7.3
	2 set stabs down	22.4*	16.4	13.6*	8.0	9.7	4.8			6.2*	3.3	7.3
	Dozer and stabs down	22.4*	22.4*	13.6*	11.0	9.7*	6.5			6.2*	4.6	7.3
-4.5 m	Rear dozer up	16.1	10.4	7.6	5.2					5.5	3.7	5.5
	Rear dozer down	22.5*	11.9	12.5*	5.9					8.3*	4.2	5.5
	2 set stabs down	22.5*	16.0	12.5*	7.6					8.3*	5.4	5.5
	Dozer and stabs down	22.5*	22.5*	12.5*	10.4					8.3*	7.4	5.5

* Hydraulically limited

The 5 tons counterweight is not allowed on roads



WX240 Series 2

STANDARD EQUIPMENT & OPTIONS

STANDARD EQUIPMENT

Hydraulic system

- Pump management system
- Electrohydraulic servo control
- Triple-pump-hydraulic system with two service pumps and separate swing pump
- Engine and pump monitoring by power limit control
- 8 selectable power stages
- Automatic power increase in DRIVE stage
- Comfortable inching control
- Powerboost system

Electric system

- Automatic battery main switch (coupled to ignition key)
- Electronic immobiliser

Engine

- Latest generation CASE Family III Tier III diesel Engine comply with current compliant with European emissions standards
- Direct injection with turbo charger and charge air cooling
- Water-cooled, low-consumption and low-exhaust compliant to EU directive
- Electric diesel filling system
- Upper- and undercarriage
- Robust, shielded arc-welded, modular chassis in box section design
- Patented disc brakes for jolt-free work
- Power Shift gear box
- Large Toolbox under the step
- Encased ball bearing slew ring with long-life lubrication
- Swing drive with low-wearing disc brake
- Independent control of blade and each stabiliser
- Automatic axle locking system
- Automatic working brake
- Travel and swing hydrostatic braking
- Centralised control of blade and stabilisers on left joystick
- Additional working lights

Driver cab

- Noise-insulated and flexibly mounted cabin in soft design

- Tinted safety glazing all around, full up and over windscreen
- Sun blinds, large roof window, transparent rain protection
- LCD with integrated error diagnosis function
- Steering column incline infinitely variable
- Ergonomic design of arm rests and foot pedals
- Driver air suspension seat individually adjustable for height and incline
- Consoles adjustable for height and length
- 12V electrical auxiliary supply in cab
- Forward/Reverse shifting on joystick
- Cab headlights

OPTIONS

Hydraulic system

- Hydraulic system for hammer, grab, shears
- Safety valves for hoist mode
- Upper- and undercarriage
- 30 km/h forward speed
- Single or twin tyres
- Dozer blade with parallel guidance
- Stabilisers with large, lockable pads for secure grip on uneven ground
- Transport holder for clamshell grab
- Intermediate bearing for prop shaft
- Central greasing nipple on boom
- Object handling kit with load hook
- Driver cab
- Air conditioning
- Cooling box
- Radio
- FOPS guard for cab roof + front
- FOPS guard for cab roof
- Two cablights rear

Standard and optional equipment shown can vary by country.

Worldwide Case Construction Equipment Contact Information

EUROPE/AFRICA/MIDDLE EAST:
Centre D'affaires EGB
5, Avenue Georges Bataille - BP 40401
60671 Le Plessis-Belleville - FRANCE

NORTH AMERICA/MEXICO:
700 State Street
Racine, WI 53404 U.S.A.

LATIN AMERICA:
Av. General David Sarnoff 2237
32210 - 900 Contagem - MG
Belo Horizonte BRAZIL

ASIA PACIFIC:
Unit 1 - 1 Foundation Place - Prospect
New South Wales - 2148 AUSTRALIA

CHINA:
No. 29, Industrial Premises, No. 376,
De Bao Road, Waigaoqiao Ftz, Pudong,
SHANGHAI, 200131, P.R.C.



The call is free from a land line. Check in advance with your Mobile Operator if you will be charged.

NOTE: Standard and optional fittings can vary according to the demands and specific regulations of each country. The illustrations may include optional rather than standard fittings - consult your Case dealer. Furthermore, CNH reserves the right to modify machine specifications without incurring any obligation relating to such changes.



Conforms to directive 98/37/CE

CASE Construction Equipment
CNH UK Ltd
Unit 4,
Hayfield Lane Business Park,
Field Lane, Auckland,
Doncaster,
DN9 3FL
Tel. 00800-2273-7373
Fax +44 1302 802829

www.casece.com

CASE
CONSTRUCTION