



Specifications

Engine

Model _____ Tier 4 interim certified ISUZU AM-4JJ1X
 Type _____ Water-cooled, 4-cycle diesel, 4-cylinder in line,
 High pressure common rail system (electric control), Turbocharger
 with air cooled intercooler, DPD system
 Number of cylinders _____ 4
 Bore/Stroke _____ 95.4 x 104.9 mm
 Horsepower SAE J1349 NET _____ 92.2 kW at 2.200 min⁻¹
 Maximum torque SAE J1349 NET _____ 391 Nm at 1.800 min⁻¹

Hydraulic system

Max oil flow _____ 2 x142 l/min @ 2.200 min⁻¹
 2 variable displacement axial piston pumps with regulating system
 Working circuit pressure _____
 Boom/Arm/Bucket _____ 34.3 MPa
 Boom/Arm/Bucket (with auto power up) _____ 36.3 MPa
 Swing circuit _____ 27.9 MPa
 Travel _____ 34.3 Mpa

Swing

Maximum swing speed _____ 11.5 min⁻¹

Travel

Travel motor _____ Variable displacement axial piston motor
 Max travel speed _____ 5.4 km/h (Automatic travel speed shifting)
 Low travel speed _____ 2.8 km/h
 Gradeability _____ 70% (35°)
 Drawbar pull _____ 161 kN

Electrical system

Alternator _____ 50 Amp

Undercarriage

Number of carriers rollers (each side) _____ 2
 Number of track rollers (each side) _____ 7
 Number of shoes (each side) _____ 44
 Type of shoe _____ Triple grouser shoe

Capacities

Fuel tank _____ 300 l
 Hydraulic system _____ 165 l
 Cooling system _____ 16.2 l

Weight and ground pressure

With 2.60 m Arm , 0.62 m³ bucket, operator, lubricant, coolant, full fuel tank

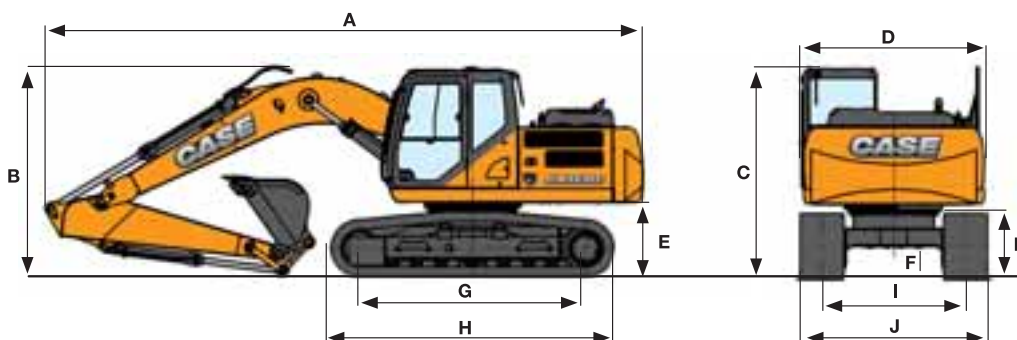
	Weight (kg)	Ground pressure (MPa)
600 mm grouser shoe	17.200	0.040

CX C-SERIES HYDRAULIC EXCAVATORS

CX160C

TIER 4 INTERIM

General dimensions



	Arm 2.20 m	Arm 2.60 m	Arm 3.00 m
Overall length (without attachment)	4410 mm	4410 mm	4410 mm
A Overall length (with attachment)	8470 mm	8440 mm	8500 mm
B Overall height (with attachment)	3050 mm	3050 mm	3150 mm
C Cab height	3050 mm	3050 mm	3050 mm
D Upper structure overall width	2540 mm	2540 mm	2540 mm
Swing (rear end) radius	2450 mm	2450 mm	2450 mm
E Clearance height under upper structure	1020 mm	1020 mm	1020 mm
F Minimum ground clearance	440 mm	440 mm	440 mm
G Wheel base (Center to center of wheels)	3190 mm	3190 mm	3190 mm
H Crawler overall length	3990 mm	3990 mm	3990 mm
I Track gauge	1990 mm	1990 mm	1990 mm
J Undercarriage overall width (with 600 mm shoes)	2490 mm	2490 mm	2490 mm
K Crawler tracks height	920 mm	920 mm	920 mm

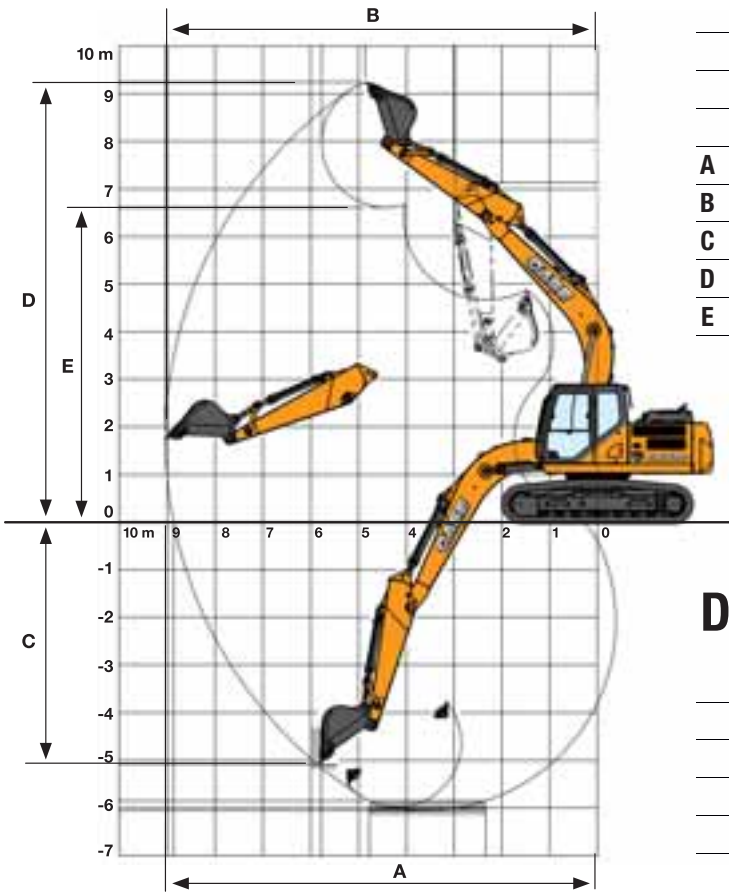
Lifting capacity

Front 360°	REACH						
	1.5 m	3.0 m	4.5 m	6.0 m	7.5 m	9.0 m	At max reach

Standard arm, 2.60 m arm length, 0.62 m³ bucket, 600G LC shoes, max reach 9.04 m

7.5 m						2600 *	2600 *					1610*	1610*	6.52
6.0 m						3240 *	3240 *	2020 *	2020*			1460*	1460*	7.68
4.5 m						4250 *	3110	3200 *	2070			1420*	1420*	8.35
3.0 m			8530 *	8530*	6170*	4670	4690	2920	3220	1980		1450*	1450*	8.68
1.5 m			8890 *	7840	7170	4250	4470	2720	3100	1880		1540*	1420	8.7
0 m			7510 *	7220	6810	3950	4290	2560	3010	1790		1710*	1470	8.44
-1.5 m	6040 *	6040*	9640 *	7340	6670	3840	4200	2490	2990	1770		2030*	1640	7.88
-3.0 m	8590 *	8590*	12880 *	7470	6720	3900	4250	2540				2680*	2020	6.96
-4.5 m	12540 *	12540*	10500 *	7770	6820	4210						4420*	2950	5.52

Performance data



	Arm 2.20 m	Arm 2.60 m	Arm 3.00 m
Boom length	5150 mm	5150 mm	5150 mm
Bucket radius	1350 mm	1350 mm	1350 mm
Bucket wrist action	178 °	178 °	178 °
A Maximum reach at GRP	8500 mm	8870 mm	9220 mm
B Maximum reach	8670 mm	9040 mm	9380 mm
C Max. digging depth	5660 mm	6060 mm	6490 mm
D Max. digging height	9010 mm	9240 mm	9290 mm
E Max. dumping height	6380 mm	6610 mm	6690 mm

Digging force With 0.62 m³ bucket (ISO 6015)

	Arm 2.20 m	Arm 2.60 m	Arm 3.00 m
Arm digging force	90 kN	79 kN	72 kN
- with auto power boost	95 kN	84 kN	77 kN
Bucket digging force	112 kN	112 kN	112 kN
- with auto power boost	118 kN	118 kN	118 kN

Lifting capacity

Front 360°	REACH						
	1.5 m	3.0 m	4.5 m	6.0 m	7.5 m	9.0 m	At max reach m

Short arm. 2.20 m arm length, 0.62 m³ bucket, 600G LC shoes, max reach 8.67 m

7.5 m												2130*	2130*	5.98				
6.0 m							3780*	3200							1940*	1940*	7.25	
4.5 m							5000*	4870	4610*	3080	3290	2050			1890*	1810	7.97	
3.0 m							9450*	8750	6670*	4590	4660	2900	3210	1970		1930*	1620	8.31
1.5 m							6440*	6440*	7100	4210	4450	2710	3110	1880		2050*	1560	8.33
0 m							7150*	7150*	6800	3950	4300	2570	3030	1810		2270*	1620	8.06
-1.5 m	6750*	6750*	10140*	7450	6720	3890	4240	2530								2700*	1820	7.47
-3.0 m	9500*	9500*	12390*	7600	6790*	3970	4330	2620								3620*	2290	6.49
-4.5 m			9510*	7860	6300*	4170										5240*	3560	4.94

Long arm. 3.00 m arm length, 0.51 m³ bucket, 600G LC shoes, max reach 9.38 m

7.5 m																1500*	1500*	6.99														
6.0 m																			3030*	3030*	2360*	2180			1380*	1380*	8.07					
4.5 m																			3870*	3190	3040*	2120			1360*	1360*	8.71					
3.0 m																			7520*	7520*	5620*	4780*	4630*	2980	3260	2020	1470*	1400	1400*	1390	9.02	
1.5 m																			11030*	8100	7200	4340	4510	2760	3130	1900	1660*	1350	1500*	1330	9.04	
0 m	3220*	3220*	8430*	7350	6860	3980	4310	2580	3020	1800									3220*	3220*	8430*	7350	6860	3980	4310	2580	3020	1800		1670*	1360	8.79
-1.5 m	5690*	5690*	9660*	7250	6650	3810	4190	2470	2970	1750									5690*	5690*	9660*	7250	6650	3810	4190	2470	2970	1750		1980*	1500	8.26
-3.0 m	7920*	7920*	12830*	7350	6660	3840	4200	2490											7920*	7920*	12830*	7350	6660	3840	4200	2490				2580*	1810	7.38
-4.5 m	12580*	12580*	11410*	7600	6820	4000	4280	2570											12580*	12580*	11410*	7600	6820	4000	4280	2570				4060*	2520	6.04

* Hydraulic capacity 87%

Standard Equipment

ENGINE

Isuzu 4-cylinder turbodiesel in line
 Certified Tier 4 interim / EU stage 3b
 Electronic fuel injection
 High pressure common rail system
 Variable geometry turbo charger
 Exhaust gas recirculation
 Diesel Particulate Diffuser (DPD)
 Neutral safety start
 Auto-engine warm up, emergency stop
 Glow-plug pre-heat
 Idle System:
 Auto-idle
 One-touch idle
 Idle shut-down
 EPF (Engine Protection Feature)
 Dual-stage fuel filtration
 Dual element airfilter
 Remote oil filter
 Green plug oil drain
 500-hour engine oil change interval
 Refuelling Pump
HYDRAULICS
 Auto power boost
 Auto swing priority

Auto travel speed change
 Selectable work modes
 Overload warning device
 SWC - SWING RELIEF CONTROL
 SSC - SPOOL STROKE CONTROL
 BEC - BOOM ECONOMY CONTROL
 AEC - AUTO ECONOMY CONTROL
 SEC - SWING ECONOMY CONTROL
 ISO pattern controls
 Pre-set auxiliary pump settings
 Switch controlled auxiliary selection
 Auxiliary valve
 Auxiliary pipe brackets
 5,000 hour hydraulic oil change interval
 1,000 hour hydraulic filter change interval
 Hydraulic track adjustment
 SAHR brake
UPPERSTRUCTURE
 Isolation mounted cab (fluid and spring)
 Common key vandal locks
 Swivel guard belly pan
 Rear view safety camera
ATTACHMENT
 Standard monoboam 5.15 m

Arm 2.60 m
 Bucket linkage with hook
 Boom mounted work light (70 watt)
 Auxiliary pipe brackets
 Centralized lube bank
 Attachment cushion valve
 Arm and boom regeneration
 Arm and boom hose burst check valves
OPERATOR STATION
 ROPS/FOPS level 1 cab
 FOPS guard OPG level II on cab roof
 Pressurized cab
 Tempered safety glass
 One-touch lock front window
 Sun visor & rain deflector
 AC/heat/defrost w/ auto climate control
 Hot & coolbox, cup holder & ashtray
 Interior dome light
 Cloth covered air-suspension seat
 Seat-belt
 Adjustable armrests
 Tilting consoles - 4-position
 Low-effort controls (short)
 Sliding cockpit (180 mm)

Controls pre-wired for auxiliary
 Auxiliary select system
 Straight travel
 Aux-in port for personal electronics
 Multifunction color monitor
 Rear-view camera
 Anti-theft system (start code system)
 Rubber floor mat
 12-volt electric socket
 24-volt cigarette lighter
 One-piece right hand window
 2 internal & 3 external view mirrors
 2 working lights (boom & upperstructure)
 2 cab top working lights
 Windshield wiper / washer
 Clear (Lexan) roof window w/ sunshade
 Storage compartments
 On-board diagnostic system
 Travel alarm with cancel switch
UNDERCARRIAGE
 600 mm steel shoes, triple semigrouser
 Full overlap turntable bearing tub
 Single track guide

Options

HYDRAULICS

Auxiliary Hydraulics -
 Single acting pedal activated breaker circuit
 Pedal-activated multifunction circuit
 Pedal activated low-flow circuit

ATTACHMENT

Arm - 2.20 m / 3 m
 Hydr. or mech quickcoupler

Buckets: Extreme / Heavy duty / GP/ ditching
 Hammers, shears, grapples
OPERATOR STATION
 Front cab guard - vertical bars (OPG level 2)
 Front cab guard - vertical bars (OPG level 1)
 Front mesh screen
 AM/FM radio w/ antenna and

2-speakers
 Side-view camera
UPPERSTRUCTURE
 Auto centralized greasing system
 Rubber bumper guard (order through Service Parts)
UNDERCARRIAGE
 Steel shoes, triple semi-grouser
 500mm, 700mm

Rubber link chain 500mm
 Triple track guide

Standard and optional equipment shown can vary by country.

Worldwide Case Construction Equipment Contact Information

EUROPE:
 via Plava, 80
 10135 TORINO - ITALIA

AFRICA/MIDDLE EAST/CIS:
 Riva Paradiso 14
 6902 Paradiso - SWITZERLAND

NORTH AMERICA/MEXICO:
 700 State Street
 Racine, WI 53404 U.S.A.

LATIN AMERICA:
 Av. General David Sarnoff 2237
 32210 - 900 Contagem - MG
 Belo Horizonte BRAZIL

ASIA PACIFIC:
 Unit 1 - 1 Foundation Place - Prospect
 New South Wales - 2148 AUSTRALIA

CHINA:
 No. 29, Industrial Premises, No. 376.
 De Bao Road, Waigaoqiao Ftz, Pudong,
 SHANGHAI, 200131, P.R.C.

CASE Construction Equipment

CNH UK Ltd
 Unit 4, Hayfield Lane Business Park,
 Field Lane, Auckley,
 Doncaster, DN9 3FL
 Tel. 00800-2273-7373
 Fax +44 1302 802829



CASE Customer Assistance
00800-2273-7373

The call is free from a land line. Check in advance with your Mobile Operator if you will be charged.



NOTE: Standard and optional fittings can vary according to the demands and specific regulations of each country. The illustrations may include optional rather than standard fittings - consult your Case dealer. Furthermore, CNH reserves the right to modify machine specifications without incurring any obligation relating to such changes.

Conforms to directive 2006/42/CE **CE**

