

Specifications

Model	GTH™ -1544	
Measurements	US	Metric
Maximum lift height	44 ft	13.41 m
Maximum forward reach	27 ft 3 in	8.31 m
Reach at maximum height	10 in	0.25 m
A Height, stowed	8 ft 7 in	2.61 m
B Length, stowed (without forks)	20 ft 4 in	6.20 m
Width	7 ft 11 in	2.42 m
C Wheelbase	11 ft 6 in	3.50 m
D Ground clearance, center	1 ft 3 in	0.38 m
E Ground clearance, axle	1 ft 3 in	0.38 m
Fork cross section	2.4 x 5.9 in	60 x 150 mm

Productivity

Maximum lift capacity	15,000 lbs	6,804 kg
Lift capacity at maximum height	10,000 lbs	4,536 kg
Lift capacity at maximum reach	3,500 lbs	1,587 kg
Drive speed	18 mph	29 km/h
Raise/Lower boom	19/15 seconds	19/15 seconds
Extend/Retract	16/14 seconds	16/14 seconds
Draw bar pull	22,500 lbs	10,206 kg
Turning radius, outside (4WS)	14 ft 7 in	4.45 m
Auxiliary hydraulic flow	2-15 gpm	7.57-56.8 lpm
Auxiliary hydraulic pressure	3,335 psi	230 bar
Tires, standard size	17.5 x 25 in. air filled 20PR	

Power

Power source	Deutz 4.1TCD turbo charged diesel, Tier 4 interim 154 hp (115 kW)* Perkins 1204E-E44TA turbo charged diesel, Tier 4 interim 147 hp (110 kW)
Electrical system	System voltage 12 volt
Alternator	Perkins 1204E-E44TA - 120amps Deutz 4.1TCD - 150amps
Battery	1000 CCA at 0°F (-18°C)
Hydraulic tank capacity	48 gal 182 L
Hydraulic system capacity (w/tank)	77 gal 290 L
Fuel tank capacity	47 gal 180 L

Weight**

33,686 lbs 15,280 kg

Standards Compliance

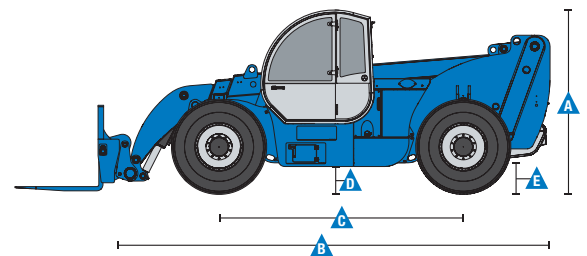
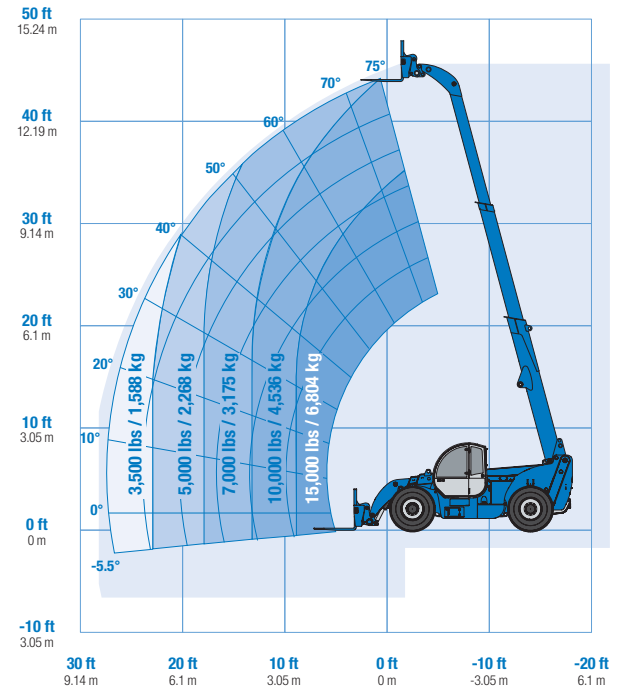
ANSI/ITSDF B56.6, CSA B335

* Also available as Tier 3 in limited regions.

** Weight will vary depending on options and/or country standards.

*** Load ratings vary depending on attachment.

Load Chart GTH™ -1544***



Features

Standard Features

Measurements

- 15,000 lbs (6,804 kg) maximum lift capacity
- 44 ft (13.41 m) maximum lift height
- 27 ft 3 in (8.31 m) maximum reach

Productivity

- Full time planetary 4-wheel drive
- 4WS
- Operator selectable front, crab, coordinated steering modes
- 2-speed forward and reverse "Shift-on-fly" hydrostatic transmission
- Transmission inch valve, brake pedal actuated
- Proportional frame leveling 7° each side
- Power assisted steering
- Inboard wet disc service brakes
- Wet disc spring applied parking brake
- 17.5 x 25 in. air filled 20PR tires
- Front axle differential lock
- High efficiency/variable displacement hydraulic pump
- Auxiliary hydraulic circuit
- ROPS/FOPS canopy (ISO compliant)
- Single, multi-function, proportional joystick
- Machine level indicator
- Full instrumentation
- Right-side screen standard on open cab
- Adjustable suspension seat
- Manual quick attach
- Retractable 3 in (8 cm) seatbelt
- 48 in carriage and pallet forks
- Boom angle indicator
- 10 micron hydraulic return filter
- 1,000 cold cranking amps at 0° F (-18° C)
- Reverse motion alarm
- Mirror-LH canopy mounted
- Mirror-RH chassis mounted

Options & Accessories

Productivity

- Fully enclosed cab (includes full glass, defroster, wipers, heater, split door, washer)
- Air conditioning
- Flashing beacon
- Work lights (2 cab mounted front, 1 backup, 2 stop/tail)
- Work light on the boom tip
- Road lights (2 chassis mounted front, 1 back-up, 2 rear stop/turn/tail, 2 front turn)
- Fenders (set of 4)
- Mounted disposable fire extinguisher
- Windshield protection grid
- Attachment electrical line (12 volt, 14A max)
- Hydraulic quick attach
- CCTV (video camera on machine back, display in the cab)

Engine Options

- Deutz 4.1TCD turbo charged diesel, Tier 4 interim 154 hp (115 kW) *
- Perkins 1204E-E44TA turbo charged diesel, Tier 4 interim 147 hp (110 kW)
- Arctic package (includes engine block heater, battery heater, Absorbed Glass Matt Battery, heavy duty starter)

Tire Options

- 17.5 x 25 in 20-ply foam-filled rough terrain tires
- 17.5 x 25 in 20-ply air-filled rough terrain tires

* Also available as Tier 3 in limited regions.

Options & Accessories

Attachment Options

- Carriages – Quick Attach
 - 60 in (1.52 m) wide carriage
 - 72 in (1.83 m) wide carriage
 - 60 in (1.52 m) rotating carriage (10° from center left and right)
 - 72 in (1.83 m) rotating carriage (10° from center left and right)
- Forks (in addition to standard 48 in pallet forks)
 - 60 in (1.52 m) pallet forks (set of two) 2.4 x 5.9 x 60 in (.06 x .15 x 1.52 m)
 - 72 in (1.83 m) pallet forks (set of two) 2.4 x 5.9 x 72 in (.06 x .15 x 1.83 m)
- Rubbish bucket
- 14 ft truss boom, 2,000 lbs maximum lift capacity
- 7 ft truss boom, 4,400 lbs maximum lift capacity



Genie United States

18340 NE 76th Street
P.O. Box 97030
Redmond, Washington 98073-9730
Telephone +1 (425) 881-1800
Toll Free in USA/Canada +1 (800)-536-1800
Fax +1 (425) 883-3475

Genie Europe

The Maltings
Wharf Road
Grantham NG31 6BH
UK
Telephone +44 (0)1476 584333
Fax +44 (0)1476 584334
Email: AWP-InfoEurope@terex.com

Distributed By:

Effective Date: January, 2013. Product specifications and prices are subject to change without notice or obligation. The photographs and/or drawings in this document are for illustrative purposes only. Refer to the appropriate Operator's Manual for instructions on the proper use of this equipment. Failure to follow the appropriate Operator's Manual when using our equipment or to otherwise act irresponsibly may result in serious injury or death. The only warranty applicable to our equipment is the standard written warranty applicable to the particular product and sale and we make no other warranty, express or implied. Products and services listed may be trademarks, service marks or trade names of Terex Corporation and/or their subsidiaries in the USA and many other countries. Genie is a registered trademark of Terex South Dakota, Inc. © 2013 Terex Corporation.